



# Networker

Rotary District 9800

A publication for  
Rotarians and  
all community  
minded people

## DG Weekly Message

### Group Study Exchange – Vocational Service Plus!

About the time you are reading this edition of Networker, our GSE Team, the “Victorian Spirit” will be en route to District 1080 in East Anglia in the UK.

We believe this is the first time that our team has departed for an exchange so early in the Rotary year, a very appropriate intersection with this Rotary Vocational Service Month. The team will be sharing and furthering their vocations but also participating in a memorable month of learning, cultural understanding and building lifelong relationships.

Our splendidly attired GSE team comprising Rotarian Julie Mason as Leader with Karen Lillywhite, Libby Nuttall, Kirsten Brewer, Steve Bourke and Virginia Loftus experienced a



District Governor Dennis Shore and Lynda

rousing farewell at the Gamekeepers Secret Inn in Rockbank on Sunday. Almost 140 attendees met with and heard from our team in an English style pub for a great afternoon of celebration, arranged jointly by the Hobsons Bay and Port Phillip Clusters.

The team made their first public presentation and left no one in doubt as to the reason for their selection to be ambassadors for our District and Australia, not only because of their individual qualities but because their vocations are consistent with the 6 areas of focus of The Rotary Foundation’s future vision. They go with our good wishes and more than a touch of envy.



### In this Issue



- 03 Vocational Service Month
- 04 Confessions of a Social Media Buff
- 05 Youth Exchange
- 06 We Need to Re-invent the Toilet
- 07 Vocational Training Team
- 08 District Conference
- 10 No Data Projector?
- 11 Speaker Bank, Out on a Limb
- 12 Letters to the Editor
- 13 Notices and Events

### Contact the Editor



#### Clarice Caricare

Do you have a letter for Clarice? Is something on your mind?

Send Clarice an e-mail at [clarice@rotarydistrict9800.org.au](mailto:clarice@rotarydistrict9800.org.au)



### October is Vocational Service Month



With far less time available to select a team and to prepare for the exchange because of the early departure, the preparedness of the team is a credit to Team Leader Julie and also Anne Peace as district GSE Chair for her untiring work to juggle the arrangements here in Australia and overseas.

Special thanks are also due to our District Foundation Chair, PDG John Davis who has forged a great relationship with his counterpart in D1080 and this has greatly facilitated preparations for the exchange.

The GSE program, which formally commenced in 1965, is made possible through The Rotary Foundation. Our District has participated in every eligible exchange, with 2 exchanges in some years. In the last Networker we reported on a presentation at the Rotary Club of Brighton North last week from our very first team. How is that for staying power!

The GSE program is very much consistent with the theme for this year of "Peace through Service". It supports the aims of The Rotary Foundation which has as its mission to advance world understanding, goodwill and peace and does so through meaningful vocational, educational, and cultural experiences for professional men and women around the world.

This team will be doing what so many before them and during this year will do, to further the work of Rotary International. They will join an alumni of 70,000 past GSE Team members who have touched the lives of millions in all of those exchanges.

Sadly The Rotary Foundation has determined that this is the last year in which GSE will be a formal program of The Rotary Foundation. However the program seems set to continue in many Districts and Governor Elect Ross Butterworth has locked in an exchange for the next Rotary year, which is great news.

My goal in seeking to exchange with a District in the UK was to demonstrate that an exchange based on the areas of focus of The Rotary Foundation could still deliver the objectives of the GSE program and The Rotary Foundation Future Vision.

As effective as programs to a range of exotic countries have been, we have had many very successful exchanges with the USA, which has similar social systems to Australia.

I reasoned that exchanging with a UK District, given the UK's links to our political and social systems could demonstrate the outcomes from concentrating on the areas of focus of The Rotary Foundation in a realistic and tangible way.

For example the causes and programs to address family violence issues in the UK are likely to be more relevant to our society than similar problems say in an African country.

At the same time, as we all know, the obligatory pilgrimage for so many young Australians to the UK tells us that there is

a meaningful and almost essential educational and cultural experience to be had in the UK.

The uniqueness of the GSE program that has perhaps been overlooked by The Foundation Trustees is the privilege to live with Rotarians in their homes and to experience the unique insight that they can provide. Those of us who have done this know what an amazing and life changing experience this is.

The important thing to bring home is not just a vocational experience – although I'm sure that will be excellent, or the cultural experience – and that will be fantastic, or the educational experience – that will be something unique. What the Team will bring home is the sum of all of those – and that will be memorable.

Life is not one-dimensional. Even in Rotary, which does require real commitment, we say the priority in life is family, work and then Rotary. A GSE experience is much the same.

The team will make friends for life; have professional contacts that are theirs to grow over the rest of their working lives, wisdom and the knowledge that they have been part of something special.

District 1080 will reciprocate our visit when their team arrives in our district in March 2013. The team comprises Leader Colin Hawes and team members Kelly Dunne (Nursery Nurse), Catherine Bullen (Food and Product Photographer), Eve Cronin (County Project Development Officer), 'Caz' Loveridge (Professional Administrator) and Alex Lynch (NHS Public Health Officer).

You will meet and hear from both teams at the District Conference 14 – 16 March 2013, where I am sure that these teams will very much exemplify our Conference theme; **"Rotary – it's amazing"**.

**Dennis Shore**  
**District Governor**





# Vocational Service Month

**By Mike McFarlane, Vocational Service Chair**

In a Rotary context, October is “Vocational Service Month”, a time for Rotarians to focus on their vocation and its importance to their local community and society at large. In recent times however, as the world seems to be spinning faster and faster, becoming more and more complex through the technology explosion; sadly, the essence of vocational service seems to be lost to many Rotarians.

In an article printed in the National Rotarian of January 1912, Paul Harris stated:  
“Of all the hundred and one ways in which men can make themselves useful to society, undoubtedly the most available and often the most effective are within the spheres of their own occupations.”

The article continued with words to the effect that when we offer service thru our respective occupation or business we cannot offer better service to our customers or our community as we are “professional” in our own particular field of endeavour.

About the same time when Paul Harris enlisted the help of other business colleagues and friends to become new Rotarians, to simply do good in the world, one’s vocations was the window to the world of Rotary; so fundamental to offering service above self it was enshrined as Rotary’s Second Avenue of Service.

Fast-forward to the year 2012, Vocational Service still remains the Second Avenue of Rotary Service, but we need to really examine it, perhaps by peeling back the layers of the original ideal to realise the latent power contained within our various vocations.

Rotary International fosters and supports the application of the ideal of service in the pursuit of all vocations inherent in the Vocational Service ideal, namely the:

- Adherence to and promotion of the highest ethical standards in all occupations.
- Recognition of the worthiness to society of all useful occupations;
- Contribution of one’s vocational talents to the problems and needs of society;



It is in this framework that latter point of contributing one’s vocational talents to solving the problems and needs of society that Vocational Service at Club level has the power to make a difference through member’s exercising their vocational muscle and providing a renewed focus on actions in this area of Service.

Your District Vocational Service Committee exists only to help Clubs and to facilitate finding vocational solutions to society’s identified problems and needs by the application of the ideal of service through our collective vocations. It is but one of your many resources, when asked it is willing to assist Clubs or Clusters by facilitating discussion, identifying, planning and implementing realistic, achievable Club driven programs with specific actions to help solve some societal problems and needs. To quote AFL Coaching Legend John Kennedy Senior exercising his vocational muscle.....don’t just think; don’t just hope, but do; do something!! .

So Vocationally lets honour the past, live in the present and importantly envisage the future together.



# Confessions of a Social Media Consultant

By Anne Kjaer Riechert, a 2010-12 Rotary Peace Fellow.

A while back, during my applied field experience in Silicon Valley as a Rotary Peace Fellow, I was having coffee with a computer scientist friend at Stanford. I had to rather embarrassingly confess to him; "I just don't get Twitter!" Why would anyone want to follow my life and reflections 140 characters at a time?

My friend explained to me that while Facebook is for friends that are now strangers, Twitter is for strangers that should be your friends. And I finally realized the power of social media is not just in 'who you know already,' but in the connection between people who share an interest.

As we saw in the Arab Spring and the Occupy Wall Street movements, one should not underestimate the power of crowds who share a common goal. Social media can be a cost effective and timely tool for Rotary to raise awareness, get people engaged and stay connected. Imagine the impact social media could have on Rotary if it was used as an alternative way to crowdsource money for social projects.



twitter



What if every club live streamed its meetings, so that members could participate even if they were away on business? What if more Rotarians used online platforms to share ideas and project experiences with other Rotarians around the world? Social media has great potential to reach young people and help ensure Rotary's future. The possibilities are tremendous.

But you can't lead if you have no followers. And social media is not the answer to everything. There comes a time for human interaction as well. The challenge, therefore, before Rotary

and Rotarians is to learn how to use these tools to lead effectively in the digital age and to know when it is time to "switch off."



You can follow Anne's work at [www.we-have-a-dream.org](http://www.we-have-a-dream.org) or contact her at [www.theplaymaker.dk](http://www.theplaymaker.dk)

*Anne Kjaer Riechert, a 2010-12 Rotary Peace Fellow, is founder of "We Have a Dream," an organization that helps children visualize their dreams through drawing or painting. She is a social media consultant.*





# Youth Exchange

By Vanda Mullen, Chair D9800 Youth Exchange

## You Are Invited to Nominate as a Host Club Now!

### How Can Your Rotary Club Become Involved?

Host Clubs and Host Families are currently being selected, as the D9800 Youth Exchange Committee prepares to welcome our Inbound students from Brazil in January 2013, to commence their year of student exchange in District 9800. Presently, the students are waiting daily for news that their application for exchange with us has been accepted.

We urgently need Host Clubs to come forward and ask that all Clubs in our District, whether previously involved in the Youth Exchange Program or not, now seriously consider participation.

Members of the D9800 Youth Exchange Committee are available at any time to provide any assistance or information needed by Clubs before making a decision.

If you have any queries, or would like a Guest Speaker presentation made at your Club, please contact Emanuel Tumino on 0428 535757 or by email at [et@meerkinapel.com.au](mailto:et@meerkinapel.com.au)

### What is the Role of the Host Family?

A Host Family is a vital part of the cultural exchange, immersing the student in a variety of activities while in the Host Country. The Host Family plays a large role in offering the student a view of another country and gains the opportunity to learn about a new culture from a young leader...



Hosting is a tremendous experience in which you can share in a young person's hopes and dreams and develop a lifelong connection with a student and family from another country. It can be challenging to help a young person's transition to a new culture and ease into the surroundings but the rewards are immeasurable.

Host Families in the Youth Exchange program come in all shapes and sizes.

They can be Rotarians or non-Rotarians, and may include young children, older children, or no children at all.

*(Extract From 'A Guide For Host Families – Rotary International)*



### Where Do Host Families Live?

Due to comprehensive transport systems to Youth Exchange approved secondary schools, your Host families may be selected from neighbouring suburbs or in some cases, willing Hosts can be some distance from your Rotary Club precinct. Hosting Rotary Clubs are encouraged to be flexible and adapt to practical Host Family solutions, to enable this outstanding Rotary Service Program to operate within your club. Thank you to all our Host Families for their willingness to welcome a student into their homes, as part of our D9800 Youth Exchange Program.





# The World Needs to Reinvent the Toilet

By Greg Pollowitz, April 9, 2012

## To Seriously Improve Global Health, Reinvent the Toilet

The toilet is a magnificent thing. Invented at the turn of the 19th century, the flush version has vastly improved human life.

The toilet has been credited with adding a decade to our longevity. The sanitation system to which it is attached was voted the greatest medical advance in 150 years by readers of the British Medical Journal.

Unfortunately it is an impractical luxury for about two thirds of the world's 7 billion people because it relies on connections to water and sewerage systems that must be built and maintained at great expense. About 40% of all people, an estimated 2.6 billion of them, have no access to even a minimally sanitary facility, according to the World Health Organization.

The result is illness and early death. Diarrhoeal diseases, including those linked to improper sanitation, are the second largest killer in the developing world, taking 2 million lives annually. A cholera outbreak in Haiti, which has so far killed more than 7,000, apparently began when sewage from a base (housing Nepalese peacekeepers) contaminated a water source.

Vaccines and medicines against these diseases help. But the ultimate solution is to address the problem at its root.

Doing so requires reimagining the toilet. First, new designs are required for toilets that are hygienic, pleasant, and cheap to make and use, and that work without being connected to a grid. Because such a facility would have to be periodically emptied, ideally excretions would be treated not as waste but either recycled on site or turned into profitable resources.



### Toilet facts:

*The average person spends three years of their life on the "john".*

*The average person flushes a toilet about 2500 times a year, while using about eight sheets of toilet paper per day.*

*An estimated 2.6 billion people worldwide do not have access to proper toilet facilities, particularly in rural areas of China and India.*

*Lack of suitable toilets and sanitation kills approximately 1.8 million people a year, many of them children.*

*According to Jack Sims, a further 500 million toilets are needed to bridge the gap in sanitation.*

*The first flushing toilet was invented in 1596 by Sir John Harrington, a British noble and godson to Queen Elizabeth I.*

*Most toilets flush in the key of E flat.*

*On average, a person will use 22 litres of drinkable water every day flushing a toilet.*



## District Conference

**The work goes on behind the scenes. Here are some Hawthorn Rotarians beavering away at Auburn Bowls Club, stuffing envelopes with information on what awaits you in Albury next March.**







# The Benefits of a Vocational Training Team

By PDG Philippe Lamoise

In late 2010 and early 2011, I led a vocational training team from District 5340 in Southern California to District 9200 in Uganda, both Future Vision pilot districts. Ten years earlier, I was part of a Group Study Exchange (GSE) between the same two districts. While both trips were a great experience, I'm especially proud of what we accomplished as a VTT.

VTTs are groups of Rotarian and non-Rotarian professionals who travel to another country to learn more about their vocation or to teach local community members about a particular field. Our VTT, funded by a Rotary Foundation global grant, helped kick-start an Adopt-a-Village project in Nkondo, Uganda, that involved four areas of focus: water and sanitation, basic education and literacy, disease prevention and treatment, and economic and community development.

During the trip, our team of four Rotarians and three other professionals provided training in farming techniques, financial planning, and microcredit. We laid the groundwork for a clean water system, trained staff at a health clinic, and renovated a



school's computer room. We motivated the local government to provide additional public funding for the school and clinic, and paved the way for partnerships with three local nongovernmental organizations to help sustain the project.

GSE supports travel for teams of non-Rotarians from a variety of professions, hosted by Rotarians who organize an itinerary of vocational, educational, and cultural experiences. My GSE was a great way to discover four countries in East Africa and establish new relationships with the Rotarians there. While the relationship-building aspects of a GSE are extremely important, I believe the VTT offers more value.



In July 2013, the GSE program will end with the implementation of the Foundation's new grant model, also known as Future Vision, but districts will still be able to build relationships and find partners in service through the International Assembly, Rotary Convention, Rotary Showcase, Project-LINK, and other Rotary avenues. It will also be possible to use district grants to fund exchanges similar to a traditional GSE.

Above: VTT team leader Philippe Lamoise provides microcredit training to farmers as part of an Adopt-A-Village project in Nkondo, Uganda.

Left: A VTT team member discusses agriculture and irrigation techniques with a farmer in Nkondo, Uganda.

*Photo courtesy of District 5340*



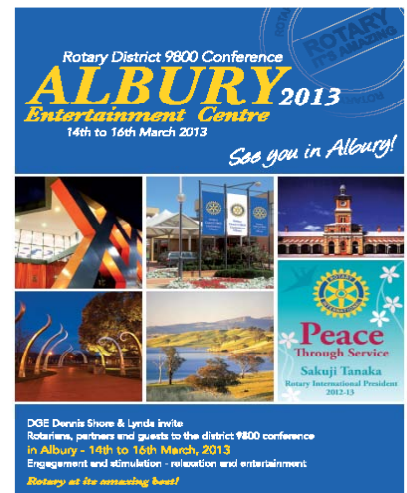
# Rotary D9800 Albury Conference



**Albury Entertainment Centre**  
**14 – 16 March 2013**

Reminder: **The Low Early Bird Registration Fee**  
is the lowest in 7 years.

Unfortunately this cannot be extended beyond the Closing Date. \*\*Register by the 12 December to take advantage of the low fee.\*\*



## Rotary – It's Amazing!

### Accommodation:

Most of the accommodation is within walking distance of the Albury Entertainment Centre.



### Rotary Market Place:

For further details of how to obtain a place in the Rotary Market Place, Please contact:  
Gerry Cantwell:  
Telephone: 0418 100 136  
Don't miss out!



### Bridge Anyone?

On Thursday 14th March, there will be a Bridge Tournament held at the Commercial Club, 530 North Street, Albury (5 minutes from the Albury CBD). Starting from 11am. Please tell your members, spouses, partners, 'Friends of Rotary'.....

Bill Troedel is the very enthusiastic organiser and would be delighted to hear from people wanting to play Bridge.

Please contact: Bill Troedel: 0408 053 223



### Tee Off!

Simon O'Donoghue invites golf players to the Golf Tournament on Thursday 14th March at the Commercial Club, 530 North Street, Albury (5 minutes from the Albury CBD).

Arrival time 11am. BBQ 11.30am to 12.30pm.

Shotgun start at 12.30pm. \$50 per head for golf.

Further details are available from Simon: Telephone: 0407 315 049



## Speakers And Entertainers

Enthralling, exciting and great fun!

Hear and see an outstanding program of speakers and entertainers

Satellite interviews with stunning international guests from UK and USA.

Find Out:

- The inside story of the Mars landing by 'Curiosity' and the next manned moon lander
- Hear the granddaughter of Australia's greatest cricketer on the eve of her trip to Covent Garden
- How Victoria's industrial might can be reborn
- How you can manage 16 outback stations from the Kimberley to south-east Australia, larger than many European countries
- Star Finalists from 'Australia's Got Talent'.

More details on speakers soon!



## And Don't Forget.... Rotary's Got Talent!

Send your entries in for Rotary's Got Talent (unleash your hidden talents!!).

Further details:

Ian Stoney: Mobile: 0400 209 802

Email: [ifxs@aapt.net.au](mailto:ifxs@aapt.net.au)

## Any Other Enquiries, Feedback?

Please contact: Noel Nclnnes Telephone: 0418 310 007

Email: [info@rotary9800conference.org](mailto:info@rotary9800conference.org)

Website: [www.rotary9800conference.org](http://www.rotary9800conference.org)



## Warning:

Attending the D9800 Conference may lead to uncontrollable laughter and excitement and lots of entertaining experiences!

You may renew old friendships, make new ones and have a fantastic time!  
We strongly suggest that your club members register for the Low Early Bird Registration Fee asap!  
Please Book EARLY



# Oh no! We Haven't got a Data Projector!

By PDG Jennifer Coburn RC Mont Albert & Surrey Hills

**"Oh no, we haven't got the data projector!"**

How often have these eight words been spoken at a Rotary Meeting?

Thankfully, it is becoming less now that many Rotary Clubs have their own laptops and data projectors or venues which provide this equipment.

One of the secrets to making your meeting work is to ensure your Guest Speaker is treated not only as a Guest, but as a Keynote Speaker would be at a major function.

Success is based on communication, with these tips working perfectly:

- Confirm your invitation in writing,
- Advise what equipment you have readily available and request advice on what the speaker needs,
- Invite them to send their presentation to you in advance for loading onto a computer prior to the meeting,
- Request a copy of your Speakers introductory bio prior to the meeting and provide this to the Chair to ensure a "suitable introduction",
- Provide both the Chairs contact details and your contact arrangements,
- Ask if they have any dietary or other requirements,
- Send a reminder email / telephone call to your speaker two or three days before to check that all is in order,
- Advise them re parking at the venue; aim to reserve a car park and arrange to meet them on arrival,
- Chair to be at the meeting early to welcome your Guest Speaker.
- Have a name badge ready for your Guest and ensure the Greeting team knows not to ask them to pay, but to welcome them and introduce immediately to the Chair for the meeting,
- Promote the Guest Speaker in your lead up Club Newsletter,
- President to advise members of the Guest Speaker for next meeting;
- Consider who is the most appropriate Chair for the meeting; who has a link to the topic or speaker,
- Have a suitable gift for the Speaker; consider a Framed Certificate with a donation to The Rotary Foundation or something personal for the speaker,
- Seek written approval of the speaker to take their photograph and use content of their presentation on your club website and club newsletter,



- Forward a copy of your Club Newsletter which features the Guest Speaker as a final thank you.

It is a pleasure to be met on arrival in the car park, proceed to the meeting venue and see your presentation opener already showing on the screen and a reserved space at the table awaiting you and a special friend or key contact allocated next to you.

These steps will certainly ensure your club can respond positively to your Guest Speaker's request for a Data Projector.







# Where is the Speaker's Bank?



The D9800 Speaker Bank is online at the website:

<http://www.rotarydistrict9800.org.au/>

Click on 'Rotary Members' at the side of the page to log in to the website and to access Speaker Bank.

NB: \*\*If you do not have a user name or password, you will need to contact the D9800 Webmaster Stuart McArthur: [webmaster@rotarydistrict9800.com.au](mailto:webmaster@rotarydistrict9800.com.au)

Thanks to Bill Dagg of the RC Point Gellibrand for suggesting Dr Jeff Craig

## Dr Jeff Craig, Group Leader Epigenetics Research

Murdoch Childrens Research Institute

Royal Childrens Hospital.Melb.

Bill writes: 'Jeff, obtained a B.Sc in genetics at Manchester University in 1987, and has looked at chromosomes from all angles, ever since. He worked in London, Edinburgh (Ph.D obtained) and Munich. His aim is to work out what makes us all different. Is it nature or nurture, or both?

The answer lies in the fascinating area of Epigenetics.

His favourite research subjects are twins, who are similar-yet different.

Contact: Dr Jeff Craig Email: [jeff.craig@mcri.edu.au](mailto:jeff.craig@mcri.edu.au)



# Out on a Limb



*Left to right: PP Sophie, PE Faye and Jen Lipzaker, founder of Out On A Limb. Photo-Faye Kirkwood.*

[www.outonalimb.org.au/](http://www.outonalimb.org.au/)

Members of the Rotary Club of Caulfield enjoying a visit to *Out On A Limb* to help package the most scrumptious fudge imaginable.

*Out On A Limb Inc.* was founded in February 2006, to fundraise for artificial limbs and rehabilitation for new amputees of natural disasters in developing countries.

Sales of the fudge also go to help fund a new electric wheelchair every year for the Amputee Unit at Caulfield Hospital as well as for the provision of artificial limbs in such places as Haiti.

The fudge is sold through the quarterly Murrumbena Community Market managed by the Rotary Club of Caulfield.



# Letters to the Editor



Dear Clarice,

Great editorial. I believe your comment on "involvement" is vital and here is an extract of an e-mail re our club.  
Congrats.

*I went through our committee lists and found many committees have never had a meeting and many members have had zero involvement.*

*I suggested we replace one of our meetings with committee meetings and the Chair gets everyone to attend.*

*Maybe 6.30 start for say an hour and then then the meal but no speaker.*

*Help for club and gets people involved.*

*I know we have potential attrition from a few less active members, of 20 year + standing, as "Rotary has sort of had its day" with them.*

*If we get them involved we will keep them.*

Regards

(Name and club withheld by request)



The Spacic sons work the fields with a horse-drawn plow in Suceagu, Romania. The family is benefiting from the *Farmers Feed the Children* project.

Through a partnership between Rotary clubs and Heifer International and a 3-H grant from **The Rotary Foundation**, farmers are given resources in exchange for donating a portion of their products to children's facilities.



September 2012 | Vol. 3, Issue 2





# Notices and Events

## NOTICES

For a full Notices & Events calendar, visit the following link:

[http://www.rotarydistrict9800.org.au/notices\\_and\\_events](http://www.rotarydistrict9800.org.au/notices_and_events)

## ROTARY'S GOT TALENT

An exciting new 'Rotary's Got Talent' competition, to be part of the Dinner Dance, will give every Club a chance to show off their talents at the Albury Conference in March.

There is a great first prize donated by Rivera Properties Metung: A Metung Getaway Package including: two nights for 4 people in a holiday unit at McMillans of Metung; Guided tour and Golf Package at Kings Cove Metung with 4 rounds of golf, electric carts, club hire and refreshments; and Director boat charter for a cruise on the Gippsland Lakes – valued at \$1,000. A great way to explore Gippsland's Riviera.

The Entry Form and competition rules are at [http://www.rotarydistrict9800.com.au/Images/rotary\\_talent.pdf](http://www.rotarydistrict9800.com.au/Images/rotary_talent.pdf)  
Entries need to be submitted before 15 October 2012.

Auditions will be held in November. The 'Rotary's Got Talent' Committee can answer any further questions.  
Ian Stoney: Mobile: 0400 209 802 ifxs@aapt.net.au



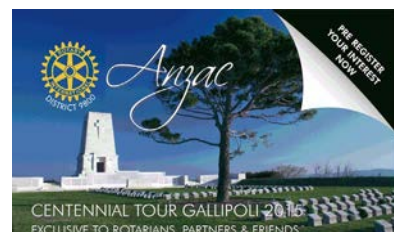
## ANZAC CENTENNIAL TOUR GALLIPOLI 2015

A project of the Rotary Club of Balwyn in conjunction with Rotary District 9800 Australia and the Rotary Club of Göksu, Istanbul and Rotary District 2420 Turkey Rotarians and Partners from Australia and New Zealand are invited to register your interest in participating in this special event. Since 2005, the Rotary Club of Balwyn and the Rotary Club of Göksu have co-hosted ANZAC Peace Tours. The 2015 Centennial Tour will comprise a 14 night package of 7 nights in Istanbul discovering modern and ancient Turkey followed by 7 night luxury cruise participating in ANZAC celebrations and visiting the Greek Islands.

To avoid disappointment you can secure your place today by paying a fully refundable deposit of only \$250 per person.

Please email us at: [Groupsadmin@aptouring.com.au](mailto:Groupsadmin@aptouring.com.au) or mail to: P.O. Box 118, Hampton, Vic. 3188.

For more information Call APT Groups on 1800 655 440 [www.balwynrotary.org.au](http://www.balwynrotary.org.au)



## EVENTS

### OCTOBER 2012

6th  
Oct

### MURRUMBEENA COMMUNITY MARKET

Saturday 6 October 2012 9am – 2pm

117 Murrumbena Road (Melways 69 A5)

Celebrating yesteryear items with a new touch. Hand Tools, Reconstructed Fashion, Books along with Cakes, Confectionery, Cards, Gourmet Foods, Quilts, Eco-Products, Fresh Produce, Olive Oil, Honey, Jewellery, Kidswear, Bath Products and so much more. Entry - Gold Coin. Following market – Sat 8 December



12th  
Oct

### CHARITY AUCTION AND DINNER

KOOYONG LAWN TENNIS CLUB 489 Glenferrie Road, Kooyong. Friday 12 October 2012 6.30pm for 7pm

\$95 per ticket (GST incl). Bookings of 10 tickets or more \$86 per ticket

THREE COURSE DINNER including quality wines, beer and soft drinks LIVE AUCTION AND SILENT AUCTION. Music featuring "BackDated"

RSVP 30 SEPTEMBER 2012 Neville Taylor 0400 169 866

[neville.taylor5@bigpond.com](mailto:neville.taylor5@bigpond.com)







**12th  
Oct**

## Hat Day at City Square

The official celebrations of Hat Day will be at City Square in Melbourne at 11.30am-1.30pm on Friday 12th October. The Millinery Association of Australia and City Hatters will present hat parades, the Royal Australian Air Force Band and Charles Bobongie will provide musical entertainment, people can take part in hat making workshops with Hatmobile, and also win a variety of prizes. We need 803 people at 1pm to break the Guinness World Record for the Most People Wearing Paper Hats simultaneously for ten minutes. Donations will be \$1 per hat with an opportunity to donate further for mental health research. If you would like any more information, please visit the website [www.hatday.com.au](http://www.hatday.com.au) Alternatively you can contact Terry Davies, Corporate Manager, (02) 8837 1900 or [terrydavies@australianrotaryhealth.org.au](mailto:terrydavies@australianrotaryhealth.org.au)



**14th  
Oct**

## Yarra Walk

Sunday, 14th October, 10.00am-Midday

Come for a walk with the Rotary Club of Richmond along a beautiful section of the Yarra River, led by Yarra Riverkeeper, Ian Penrose. Learn about the Yarra River & parkland, their history & the wonderful life they support.

Stay for a BBQ lunch. BYO drinks, utensils etc.

COST FOR THE DAY: \$10 PP. Children 5 yrs & under free.

BOOKINGS: Kristen Widdop - M: 0419 533 904

E: [kristen\\_widdop@hotmail.com](mailto:kristen_widdop@hotmail.com)



**18th  
Oct**

## GIVE BACK TO THE MAC

The Rotary Club of Melbourne Park presents a social event raising money and awareness for the Peter MacCallum Foundation cancer treatment and research.

Thursday 18th October @ Next Level - Hotel Barkly (St Kilda) from 7:30pm till late. Next Level is a fantastic venue with kind and generous management

For Entertainment, Luke O'Connor (Steelbirds) will perform live with DJ Mark John then DJ Jean-Paul to follow.

A photo booth has been donated by Solution Entertainment (thank you) which puts you in charge of getting some cool shots.

Tom Stevens (Close Up Magic) will blow your mind with his magic tricks. Finger food will impress

Dress up or dress down. The most important thing is that you make the effort to come. This is your way of 'giving a bit back' and having a good night out at the same time.

Pre-sale tickets are \$20 and can be purchased online @ <http://www.trybooking.com/Booking/BookingEventSummary.aspx?eid=33747>

or facebook <http://www.facebook.com/#!/events/501060833238554/> or call Linden on 0439653325 and they will be delivered to you.



**19th  
Oct**

## CHARITY GOLF DAY - RC NORTH BALWYN

FRIDAY OCTOBER 19, 2012 - PROCEEDS TO FARESHARE

FREEWAY GOLF COURSE, COLUMBA STREET, NORTH BALWYN.

Tee Times 9.45 am to 1.15 pm (Players will be advised of starting time week prior)

Presentations around 5:30 pm in Hospitality Marquee

Stableford, Mens and Ladies, 18 Holes

Prizes: Winner, Runner Up, Nearest the Pin, Longest Drive.

Take Your Odds on 18th Par 3, Auctions and Raffles.

A Fun Day for Regular and Social Golfers.

Entries close 5th October 2012, COST \$75.00 per player.

Cheque payable to: Rotary Club of North Balwyn,

P.O. Box 135, North Balwyn 3104. Or cash on the day.

More Info: Adrian Ranson: 0418 177 100 or 9460 1822.

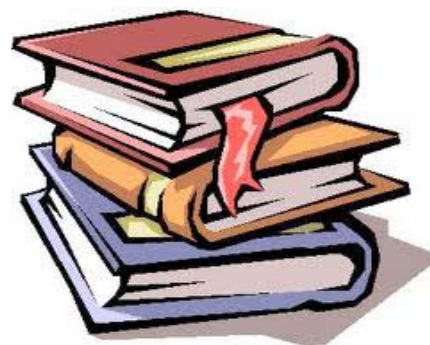




## OCTOBER 2012

### 20-21 Oct ANNUAL BOOK FAIR

The Rotary Club of Albert Park will be holding its annual Book Fair on Saturday, 20th and Sunday, 21st October from 10am to 4pm. The fair will be held in conjunction with Albert Park College's Art Show, held at 83 Danks Street, Albert Park. There will be thousands of "pre-loved" books of every description for children and adults. Further information, see <http://www.clubrunner.ca/Data/9800/4551/HTML/176775/BookSaleA3FINAL.pdf>



### 27th Oct WHITE ELEPHANT SALE - Rotary Club of Melbourne

Saturday 27th October at the Abbotsford Convent in Collingwood from 8am.

Quality and Designer second hand clothing including some vintage pieces, handbags and shoes, Bric a Brac, china, pottery, crystal and glassware, antique Japanese and Chinese bowls, jewellery, general household goods. The sale will be in the Linen Room at the Convent. There is a gold coin admission to the Slow Food Market on the day. Enquiries to Maryla Juchnowski 0422 068 229



### 28th Oct Coffs City Rotary Golf Challenge - 28 October

The best performing Rotary team will win \$1,000 for their clubs charity account. All players and teams will be eligible for a host of other prizes including a hole in one prize of \$10,000 for their nominate charity. Contact Peter Lindsay  
PO Box 2079, COFFS HARBOUR NSW 245  
Mob 0418 280 604 [plindsay@achieveoutcomes.com.au](mailto:plindsay@achieveoutcomes.com.au)



### 28th Oct CAMCARE CONCERT - Rotary Club of Hawthorn

The Grand Camcare Concert will be held on 28th October this year at Genazano, 301 Cottham Rd, Kew. It promises to be an outstanding concert once again. Tony Charlton has arranged a talented and diverse group of musicians and entertainers for the event who include:  
*The Royal Melbourne Philharmonic Choir*  
*Allan Kogasovski, piano: Sally Cooper, Violin*  
*Blackburn High School Band*  
*Paul Jennings Comedian and impersonator*  
*Rebecca Chambers, Classical pianist and former Young Australian of the Year*  
At only \$25.00 or \$50 family this represents incredible value. Proceeds will be shared between Camcare and club revenue. Please call Noel Halford on 9889 1519 or 04118 901 to book.



## NOVEMBER 2012

### 10th Nov Rotary Club of Glen Eira 25th Anniversary

Saturday 10th November 2012  
Kooyong Tennis Centre, Glenferrie Road, Kooyong  
\$85 per person Pre-Dinner Drinks at 6pm for 6.30pm 3 course buffet  
Lots of fun, music and entertainment, together with old memories, and areunion with past members, and members from our friendship club in Japan, the Rotary of Ogaki-West. For more information, call Geoff Asher 9571-3833 or John Strong 9836-9165  
Visit our website [rotarygleneira.org.au](http://rotarygleneira.org.au)





## NOVEMBER 2012

**11th  
Nov**

### CITY2SEA

SUNDAY 11th NOVEMBER 2012

THE CITY2SEA 14km FUN RUN STARTING AT THE ARTS CENTRE, AROUND ALBERT PARK LAKE AND FINISHING BY THE SEA AT ST KILDA.

Rotary District 9800 has again been asked again to source and manage the 700 volunteers for this great event. Let us know 'asap' that you would like to be a part of this great event.

What are the benefits of participating in City2Sea 2012?

1. **Raise funds for your valuable projects ie 20 volunteers = \$600!**
2. **Involves your Club as a team in a fun event**
3. **Promotes Rotary to 15,000+ participants and spectators.**

Contact Sandi Fulcher, City2Sea Event Coordinator

Mobile: 0416 063 434 or Work: 9686 0688

Email: [sandi\\_fulcher@hotmail.com](mailto:sandi_fulcher@hotmail.com)

<http://www.rotarydistrict9800.org.au/site/1164/We%20Want%20You%20As%20A%20Volunteer%20for%20The%20City2Sea%20Fun%20Run%202012%282%29.pdf>

**11th  
Nov**

### ANNUAL PAINT IN THE PARK

November 11th. Glen Eira Artists Society and Rotary Club of Caulfield Register by email [glenart2@gmail.com](mailto:glenart2@gmail.com), and include a short Artist's Statement and Resumé Briefing at 10.00 am at the Rotunda, Caulfield Park



**14th  
Nov**

### PAUL HARRIS BREAKFAST

Chief Commissioner Ken D. Lay APM, Victoria Police "Contemporary Issues in Policing"

Wednesday, 14th November 7.15 for 7.30 till 9.00am

The RACV Club \$60.00 (incl. GST)

FOR FURTHER INFORMATION PLEASE CONTACT Marjorie Gerlinger, PH: 9807 8320 / 0419

302 109 FX: 9888 3692

Email: [marbern@bigpond.net.au](mailto:marbern@bigpond.net.au)

Booking Form [http://www.rotarydistrict9800.com.au/Images/PHF\\_Breakfast\\_bookingflyer.pdf](http://www.rotarydistrict9800.com.au/Images/PHF_Breakfast_bookingflyer.pdf)



**25th  
Nov**

### GSE WELCOME HOME FUNCTION

THE D1080 UK CAMBRIDGE-NORWICH GSE TEAM RETURNS ISUNDAY 25 NOVEMBER 2012

PUT THIS DATE IN YOUR DIARY

TO ENSURE YOU CAN BE PART OF THIS EXCITING EVENT

PITRUZZELLO ESTATE, 25 DEVERALL ROAD SUNBURY/GISBORNE 12:00PM FOR 12:30PM START

MORE DETAILS AND BOOKING ARRANGEMENTS WILL BE ANNOUNCED SOON



## Do you have a letter for Clarice?

### Contact the Editor

Do you have a letter for Clarice?  
Is something on on your mind?

Send your thoughts to her email address at [clarice@rotarydistrict9800.org.au](mailto:clarice@rotarydistrict9800.org.au)



## ROTARY DISTRICT 9800 Events Calendar

For a full Notices & Events calendar, visit the following link:  
[http://www.rotarydistrict9800.org.au/notices\\_and\\_events](http://www.rotarydistrict9800.org.au/notices_and_events)

To submit Notices & Events, please send Clarice all the details at:  
[clarice@rotarydistrict9800.org.au](mailto:clarice@rotarydistrict9800.org.au)





## Membership/Attendance Figures: August

| District 9800   |              | Attendance |       | Membership |           |     |                      |          |
|-----------------|--------------|------------|-------|------------|-----------|-----|----------------------|----------|
| 2012/2013       |              | August-12  |       | At June 30 | August-12 |     |                      |          |
| Club            | Cluster      |            |       |            |           |     |                      |          |
|                 |              | No. of     | Month |            | Sta       | End | Net gain /loss 12/13 | % Change |
|                 |              | Mtgs       | %     |            | rt        |     |                      |          |
| Melbourne Park  | Heritage     | 4          | 60%   | 18         | 22        | 22  | 4                    | 22.2%    |
| Melton Valley   | Westside     | 5          | 92%   | 16         | 16        | 18  | 2                    | 12.5%    |
| Docklands       | Batman       | 4          | 70%   | 9          | 9         | 10  | 1                    | 11.1%    |
| St Kilda        | Stonnington  | 4          | 67%   | 9          | 9         | 10  | 1                    | 11.1%    |
| North Melb      | Heritage     | 5          | 58%   | 24         | 24        | 26  | 2                    | 8.3%     |
| Bendigo S'dale  | Goldfields   | 4          | 59%   | 26         | 29        | 28  | 2                    | 7.7%     |
| Brimbank Cent   | Gateway      | 5          | 71%   | 27         | 27        | 29  | 2                    | 7.4%     |
| Sunshine        | Westside     | 4          | 57%   | 18         | 18        | 19  | 1                    | 5.6%     |
| Wyndham         | Port Phillip | 5          | 88%   | 26         | 27        | 27  | 1                    | 3.8%     |
| Albert Park     | Batman       | 5          | 32%   | 63         | 63        | 65  | 2                    | 3.2%     |
| Castlemaine     | Calder       | 5          | 63%   | 36         | 37        | 37  | 1                    | 2.8%     |
| Keilor East     | Gateway      | 4          | 76%   | 40         | 41        | 41  | 1                    | 2.5%     |
| Brighton N      | Beachside    | 5          | 71%   | 50         | 51        | 51  | 1                    | 2.0%     |
| Hawthorn        | Yarra        | 4          | 89%   | 57         | 57        | 58  | 1                    | 1.8%     |
| Essendon        | Gateway      | 4          | 50%   | 68         | 68        | 69  | 1                    | 1.5%     |
| Camberwell      | Eastside     | 5          | 78%   | 77         | 77        | 78  | 1                    | 1.3%     |
| Altona          | Port Phillip | 4          | 58%   | 24         | 24        | 24  | 0                    | 0.0%     |
| Bacchus Marsh   | Westside     | 5          | 62%   | 35         | 35        | 35  | 0                    | 0.0%     |
| Bendigo S'hurst | Goldfields   | 5          | 74%   | 51         | 50        | 51  | 0                    | 0.0%     |
| Boroondara      | Eastside     | 4          | 47%   | 15         | 15        | 15  | 0                    | 0.0%     |
| Brunswick       | Heritage     | 5          | 38%   | 28         | 28        | 28  | 0                    | 0.0%     |
| Canterbury      | Eastside     | 4          | 65%   | 41         | 41        | 41  | 0                    | 0.0%     |
| Caulfield       | Beachside    | 5          | 78%   | 10         | 10        | 10  | 0                    | 0.0%     |
| C'stone /EMalv  | Stonnington  | 5          | 74%   | 44         | 43        | 44  | 0                    | 0.0%     |
| Collingwood     | Heritage     |            |       | 20         |           | 20  | 0                    | 0.0%     |
| Essendon N      | Gateway      | 5          | 60%   | 26         | 26        | 26  | 0                    | 0.0%     |
| Fitzroy         | Heritage     |            |       | 24         |           | 24  | 0                    | 0.0%     |
| Gisborne        | Calder       | 4          | 73%   | 24         | 24        | 24  | 0                    | 0.0%     |
| Glen Eira       | Beachside    | 4          | 82%   | 18         | 18        | 18  | 0                    | 0.0%     |
| Glenferrie      | Yarra        | 4          | 66%   | 42         | 42        | 42  | 0                    | 0.0%     |
| Kangaroo Flat   | Goldfields   | 4          | 74%   | 25         | 26        | 25  | 0                    | 0.0%     |
| Kew             | Yarra        | 5          | 76%   | 35         | 35        | 35  | 0                    | 0.0%     |
| Kew/Yarra       | Yarra        | 5          | 92%   | 17         | 17        | 17  | 0                    | 0.0%     |
| L'ton Pt Cook   | Port Phillip | 5          | 60%   | 34         | 34        | 34  | 0                    | 0.0%     |



|  |              |   |              |             |     |             |            |              |
|--|--------------|---|--------------|-------------|-----|-------------|------------|--------------|
| Melton                                 | Westside     | 4 | 84%          | 27          | 27  | 27          | 0          | 0.0%         |
| Moonee Valley                          | Gateway      |   |              | 14          |     | 14          | 0          | 0.0%         |
| Point G'brand                          | Hobsons B    | 4 | 50%          | 37          | 37  | 37          | 0          | 0.0%         |
| Port Melbourne                         | Batman       | 4 | 70%          | 10          | 10  | 10          | 0          | 0.0%         |
| Richmond                               | Heritage     | 4 | 63%          | 37          | 37  | 37          | 0          | 0.0%         |
| Rochester                              | Goldfields   | 5 | 77%          | 8           | 8   | 8           | 0          | 0.0%         |
| Southbank                              | Batman       | 4 | 61%          | 23          | 23  | 23          | 0          | 0.0%         |
| Toorak                                 | Stonnington  | 4 | 67%          | 30          | 30  | 30          | 0          | 0.0%         |
| Yarraville                             | Hobsons B    | 4 | 70%          | 20          | 20  | 20          | 0          | 0.0%         |
| Melbourne                              | Batman       | 5 | 68%          | 234         | 236 | 232         | -2         | -0.9%        |
| Brighton                               | Beachside    | 4 | 58%          | 108         | 107 | 107         | -1         | -0.9%        |
| Cent MelbS'ise                         | Batman       | 4 | 71%          | 57          | 57  | 56          | -1         | -1.8%        |
| Footscray                              | Hobsons B    | 5 | 54%          | 55          | 54  | 54          | -1         | -1.8%        |
| Carlton                                | Heritage     | 4 | 92%          | 41          | 40  | 40          | -1         | -2.4%        |
| Kyneton                                | Calder       | 4 | 74%          | 40          | 40  | 39          | -1         | -2.5%        |
| Balwyn                                 | Eastside     | 4 | 63%          | 77          | 76  | 75          | -2         | -2.6%        |
| North Balwyn                           | Eastside     | 5 | 87%          | 77          | 74  | 75          | -2         | -2.6%        |
| Malvern                                | Stonnington  | 5 | 67%          | 37          | 36  | 36          | -1         | -2.7%        |
| Daylesford                             | Calder       | 4 | 85%          | 31          | 29  | 30          | -1         | -3.2%        |
| Melbourne S                            | Batman       | 4 | 85%          | 29          | 28  | 28          | -1         | -3.4%        |
| Altona City                            | Port Phillip | 4 | 78%          | 26          | 25  | 25          | -1         | -3.8%        |
| Flemington                             | Hobsons B    | 4 | 83%          | 25          | 25  | 24          | -1         | -4.0%        |
| West F'scray                           | Hobsons B    | 5 | 75%          | 25          | 24  | 24          | -1         | -4.0%        |
| Woodend                                | Calder       | 5 | 73%          | 25          | 25  | 24          | -1         | -4.0%        |
| Brighton Beach                         | Beachside    | 3 | 65%          | 21          | 21  | 20          | -1         | -4.8%        |
| Keilor                                 | Gateway      | 4 | 76%          | 42          | 42  | 40          | -2         | -4.8%        |
| Eaglehawk                              | Goldfields   | 5 | 83%          | 40          | 39  | 38          | -2         | -5.0%        |
| Bendigo                                | Goldfields   | 4 | 59%          | 78          | 78  | 73          | -5         | -6.4%        |
| Werribee                               | Port Phillip | 4 | 68%          | 41          | 38  | 38          | -3         | -7.3%        |
| Hoppers Xing                           | Port Phillip | 5 | 64%          | 23          | 23  | 21          | -2         | -8.7%        |
| Prahran                                | Stonnington  | 4 | 72%          | 23          | 21  | 21          | -2         | -8.7%        |
| Bendigo S                              | Goldfields   |   |              | 34          |     | 31          | -3         | -8.8%        |
| Ech-Moama                              | Goldfields   | 4 | 72%          | 18          | 15  | 16          | -2         | -11.1%       |
| Williamstown                           | Hobsons B    | 4 | 52%          | 41          | 36  | 36          | -5         | -12.2%       |
| Tullamarine                            | Gateway      | 5 | 49%          | 19          | 16  | 16          | -3         | -15.8%       |
| <b>Clubs Reporting</b>                 |              |   | 65           |             | 65  |             |            |              |
| <b>No. of Members</b>                  |              |   |              | <b>2550</b> |     | <b>2526</b> | <b>-24</b> | <b>-0.9%</b> |
| <b>% Average</b>                       |              |   | <b>68.8%</b> |             |     |             |            |              |
| <b>% of Clubs Reporting Attendance</b> |              |   | <b>94%</b>   |             |     |             |            |              |
| <b>% of Clubs Reporting Membership</b> |              |   |              |             |     | <b>94%</b>  |            |              |





# Networker

Rotary District 9800

A publication for  
Rotarians and  
all community  
minded people

## DG Weekly Message

### Ethics in Action

Lynda and I have been very privileged to be able to share the pride and pleasure of clubs as they have celebrated significant anniversaries in this Rotary year.

To date we have shared in celebrations for the Rotary Clubs of Keilor (50 years), Melton (40 years), Melbourne South (a venerable 60 years) and Balwyn (40 years) – and there are many more to come through this year.

Without exception the celebrations have been memorable and a reminder of an amazing legacy of achievement, fellowship and service above self.

The Rotary Club of Balwyn celebrated their anniversary last week and we were treated to a brilliant address by the Reverend Tim Costello, AO in his capacity as CEO of World Vision Australia. Quite possibly it was the best address I have heard about Rotary, delivered with passion, humour, pathos and from the heart. Tim really nailed what he had to say about Rotary. There were many take away lessons and a real perceptiveness of what Rotary does.

Two phrases out of many delivered by Tim are worth stamping into our future Rotary lexicon.

“Connection with the community” is a hallmark of our Rotary service and something that perhaps we just



District Governor Dennis Shore and Lynda

do without thinking about what it means. So often Rotary has been the catalyst for making things happen locally and globally. Bill Gates has observed that Rotary was probably the only organisation that could have made polio eradication a real possibility and now very nearly a fact. At the local community level I am sure every club has many examples of the Club's vital role in making a difference to the community. It is often said about Rotary that it enables ordinary people to do extraordinary things and here I am paraphrasing a quotation made by the President of the Rotary Club of Balwyn and attributed to Past Rotary International President Clem Renouf. In truth I think most Rotarians have a developed sense of the possibilities and that is why they are Rotarians and why they are proud to be members of not only their club but Rotary International.

In this month of Vocational Service, I was also galvanised by another memorable turn of phrase used by Tim – “Rotary is ethics in action”. In the context he used the words, Tim was talking about Rotary as an organisation and the sentiment captured by the Four-Way Test as well as the Rotary Code of Conduct.

But I do want to talk about the Avenue of Vocational Service as an

### In this Issue



- 03 Smart Talkers Race the Clock
- 04 Rice Growing in the Solomons
- 05 Vocations in Service
- 06 Vocational Service Building Peace
- 06 GSE Team Arrives
- 07 Speaker's Bank
- 07 Welcome New Members
- 08 Recycling Project
- 08 Letters to the Editor
- 10 Notices and Events

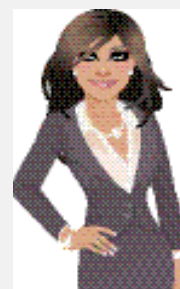
### Contact the Editor



#### Clarice Caricare

Do you have a letter for Clarice? Is something on your mind?

Send Clarice an e-mail at [clarice@rotarydistrict9800.org.au](mailto:clarice@rotarydistrict9800.org.au)



### October is Vocational Service Month





opportunity to reinforce and promote ethics in business. All of the opportunities we have to make a difference through the Avenue of Vocational Service are important but surely ethics in business is something that should be a real priority for us as Rotarians. It is not only through our own business connections but the opportunity as an organisation to help instil meaningful values in society. The work that Rotary does with young people through both the Avenue of New Generations service as well as Vocational service will make a real difference in the future.

Tim Costello contrasted the Rotary ethos of 'Service above Self' against what seems to have become the credo for so many people – "what's in it for me". With this selfish attitude it is little wonder that the traditional values of connection with the community are not as alive and as well as they should be. We are all familiar with the slogan "Thank God for the Salvos". I think a similar sentiment is also appropriate for Rotary. The club anniversaries that have been celebrated demonstrate with clarity how integral Rotary has been to giving a heart to communities. It still does but we sometimes don't see ourselves as Tim Costello did and we thank Tim for reminding us that this remains a really key focus for Rotarians.

Society seems to have allowed big business and big Government to desensitise us to the point that "what's in it for me" seems an appropriate priority. In a perverse way expectation that "Government" will somehow ensure that basic controls are in place allows us to be victims of rapacious business practices that too often feed a desire for a quick buck. What can and should Rotary do about this?

Our Vocational Service goals provide a variety of opportunities to make a difference. Our new program this year to recognise outstanding contributions to the wider community are a positive innovation to highlight "ethics in action". Our ongoing programs for education in business and "Students in Free Enterprise" as well as our health service programs all make a difference.

The central question of ethics is "What ought one to do"? Whenever we face this question, we are dealing with ethics. This was the basis of Herb Taylor's authorship of the Four-Way Test. He recorded his thoughts as follows: "we must be morally and ethically strong. I knew that in right there was might. I felt that if we could get our employees to think right they would do right. We needed some sort of ethical yardstick that everybody in the company could memorize and apply to what we thought, said and did in our relations with others".

The question of ethics is something that should be at the forefront all year and not just in the special Vocational Service month in the Rotary calendar. I think if we all hold onto the idea of Rotary as "ethics in action" then we will indeed make a difference.

Finally, in this year of "Peace through Service" and many special club anniversaries it seems appropriate that I should share with you the splendid symbol of the year so kindly crafted for me by President Ted Cunningham of the Rotary Club of Keilor on the occasion of their 50th anniversary. I am proud to wear it to all the anniversaries as a very tangible reminder of the theme! Now that really is amazing.

Dennis Shore  
District Governor







## Smart Talkers Race the Clock

By Annie Wysham

The Rotary Club of Richmond was acknowledged in an article by Vince Chadwick, The Age, September 18th, 2012, titled: 'Smart talkers race the clock'

The Rotary Club of Richmond, in partnership with the CASS Foundation\*, funds the University of Melbourne PCAST (Pressure Casting) project - an innovative technique to produce high quality artificial limbs in developing countries, where a large number of amputees are unable to access adequate services to obtain a good fitting prosthesis.

Vince Chadwick wrote:

*'Engineering student Sheridan Laing spent two years investigating how to improve prosthetic limbs in Vietnam. Rather than focusing on the shank and foot — which can be largely prefabricated by charities — Ms Laing focused on the socket where a prosthetic connects to the body.' .....*

*'With funding from the Rotary Club of Richmond and the CASS Foundation her team pioneered a water-based system to cast a socket in less than three minutes, eliminating the need for imperfect moulds previously done by hand.'*  
*A public speaking competition to help students take their research outside the quad – the Three Minute Thesis competition – was a chance for Sheridan to share with a wider audience her research and project 'in a concise, clear and understandable way'.*

Read more: <http://www.theage.com.au/national/education/smart-talkers-race-the-clock-20120917-262ba.html#ixzz26pAhHVOI>



Trans-tibia below knee prosthesis



Students Naja McFadden and Sheridan Laing.

\* CASS is an acronym for 'Contributing to Australian Scholarship and Science'. CASS is a private philanthropic foundation, established in 2001, to support and promote the advancement of education, science and medicine, and research and practice in those fields.



## Re-establishing Rice Growing in the Solomons

PP Bob Bott and PP Bill Oakley

In British colonial times The Solomons was a prolific rice growing country, with much of the rice exported. Since independence rice growing waned, and the Solomons began importing rice. With the increase in the cost of rice over recent years, rice is getting beyond the reach of many Solomon Islanders.

In 2008, with the help of a Royce and Jean Abbey Agricultural Scholarship, the Rotary Club of North Balwyn brought a young Solomon Islander, Joseph Aarons from the Don Bosco Rural Training College, Tetere, to Australia to learn about growing rice growing. Joseph spent over three months, mostly at the rice industry's rice development farm in NSW learning the skills and techniques of rice growing. He returned to Tetere and set about establishing rice growing at the college.

RC North Balwyn continued to support the project first by funding pipes and a pump to instal irrigation for the rice; then by funding a concrete square, used now to dry the rice, and later as a foundation for the rice storage shed.

At Tetere, student number grew from 40 to over 130 as people came from near and far to learn rice growing and other agricultural skills. RC North Balwyn was again called to help with the building of extra bunks at Tetere to accommodate students through the week. We funded the timber and equipment for 50 bunks, and the students built their own bunks with their new found technical skills.

Recognising the value of developing rice growing throughout the villages the SI government arranged a training seminar at Tetere for representatives from each of the 9 SI Provinces. Bob Bott who has been the mainstay of this project for the past 6 years, and Bill Oakley will travel to Tetere this year to attend graduation ceremonies, and to discuss with officials how Rotary can continue to support and develop local rice growing in the Solomon Islands







# Vocations in Service

By Mike McFarlane, Chair Vocational Service

Following on from last week's thought on the application of the ideal of service and the Contribution of one's vocational talents to solving some of the problems and needs of society, its time for us to really exercise our collective vocational muscle and do something centred on Vocational Service.

The vision this year is to foster within Clubs an attitude of active engagement in Vocational Service programs and by drawing on the vocational capital and passion residing in Clubs, making a real and visible difference to the lives of others by the application of members' vocations and letting the world know Rotarians are doers, not just talkers!!

So, clearly if we are to have our Vocational Service actions speak louder than words, then we need Members, Clubs, and Clusters to metaphorically throw their hearts and minds over the vocational service bar and harness their vocational talent by adopting new, innovative Vocational Service program as identified by Members. Also continue championing the tried and tested Vocational Service programs where there is genuine and substantial support.

Hopefully, this engagement will provide very visible results within Rotary and the wider community. By efficiently connecting the talent in the professions, trades, and other vocations and intelligently using the business acumen and knowledge residing in our members we can release the latent potency of Rotary's membership.

Clubs are encouraged to embark on at least one new Vocational Service program using the strength of their membership, lead by one of their own Club Members with the passion and drive to affect a positive outcome. District will assist Clubs by supporting collaborative innovation across the various Rotary silos; facilitating innovative ideas to evolve through the development of a genuine action based mind-set; namely, Vocations in Service ("ViS").

Your Club may consider carrying out an audit of Vocational skills available in it and if necessary mix and match the talent within Clusters to collectively create and implement a new "ViS" program. The "ViS" sub-committee, in conjunction with Clubs, will help in this regard by establishing vocations an opt-in database across the District.

Focussing on the diversity and strength of our members' vocations this addition to the Vocational Service available list of options will provide an opportunity for Clubs to get out there and work together on "ViS" programs

The forerunner of the "ViS" concept has its genesis in the success of the Sumba Eye Program using the talent and skill of two Rotarians from two Clubs in the one Cluster (Yarra Cluster) who, together with non-Rotarians, have developed and delivered life-changing programs by giving sight to the blind through the application of their vocations.

An living example of ViS can be seen on the You Tube video at: [http://www.youtube.com/watch?v=cmNxgoJp\\_H8](http://www.youtube.com/watch?v=cmNxgoJp_H8)

Remember.... ***"Never doubt that a small group of committed people can change the world. Indeed, it is the only thing that ever has."*** Margaret Mead



## Rotary - Vocations in Service

| FOOD & WATER SERVICE       |         | HEALTH               |  |
|----------------------------|---------|----------------------|--|
| - Water Treatment          |         | - Surgical           |  |
| - Nourishment              |         | - Medical            |  |
| - Sanitation               |         | - Dental             |  |
| - Infrastructure           |         | - Disease Prevention |  |
|                            |         | - Mental Health      |  |
| BUSINESS VOLUNTEERISM      |         | Vocations            |  |
| - Mentoring / SIFE         | in      | -                    |  |
| - Ethics                   | Service | - Offshore           |  |
| EDUCATION / YOUTH WELLNESS |         | COMMUNITY            |  |
| - Literacy                 |         | - Employment         |  |
| - Maths                    |         | - Shelter & Housing  |  |
| - Computers                |         | - Homelessness       |  |
| -                          |         | - Problems & Needs   |  |
|                            |         | - Recognition        |  |

# Using Vocational Service to Build Peace

*By Sakuji Tanaka, RI President.*

In Japan, we place great importance on the value of work. Whatever we are called to do, we should do it to the very best of our abilities, with dignity and with pride. Whether the job is running a country or shining shoes, there is honor in every vocation.

I grew up embracing this belief, but I had never stopped to contemplate it. One day, in my third year in Rotary, we had a speaker at our club who talked about the purpose of one's livelihood. He asked, why do we work hard? What is the importance of our work?

I had never thought about this before. I never saw it as a question. We work to earn money. We work to be successful. We work because it is required of us. To me, this was all.

On that day, I learned about the idea of vocational service. It was the idea that through our work, we can serve others. We think about others' needs, and grow to care more for the needs of our communities. We build positive connections between people, and a more peaceful world.

This is the idea that has changed my life. It did not change how much I worked, or how hard I worked. But it changed why I worked, and how I experienced my life. It has made me see a higher purpose in everything I do.

The idea of Service above Self is an idea that is unique to Rotary. But it is an idea that can be embraced by anyone. And I believe very much that in Rotary, and beyond Rotary, we can build Peace through Service.

*Posted on October 2, 2012*



**Julie Mason and the GSE Team have arrived at Norwich airport, where they were met by DG Trevor Sayer.**





# Speaker's Bank Update

The D9800 Speaker Bank is online at the website:

<http://www.rotarydistrict9800.org.au/>

Click on 'Rotary Members' at the side of the page to log in to the website and to access Speaker Bank.

Loryn Clark (R.C. Albert Park) recommends

## Motoring Journalist, Chris de Fraga

Chris writes: 'I mostly talk about crashing cars - they teach one to drive but not how to crash. (The one you walk away from is the important one. I have crashed as a passenger and as a driver and it was much worse as a passenger as there was nothing I could do about it.) I have attended for more than 40 years many car makers' safety forums in Australia, Europe and Japan going back to the first Mercedes S Class with ABS brakes in Germany and have always been interested in performance - safety and speed.

I have road tested new cars every week since 1965 and attended new car launches and car shows in the USA, Europe and Japan. I was the motor editor of The Age for 27 years and for the Melbourne Herald for two years before that and now talk weekly on 3AW on cars. And I have been an advanced driving instructor for about eight years in the 1980s. But my main interest now is the hospitality industry - two pubs in Richmond. I have written a book on the history of yachting in Port Phillip and my Melbourne University degree is in the History and Philosophy of Science and Scandinavian Studies.

I am a member of the Rotary Club of Balwyn and talks to Rotary meetings are for me a way to spread car safety knowledge'.

Contact: Chris de Fraga Telephone: 0418 543 114 Email: [defraga@netspace.net.au](mailto:defraga@netspace.net.au)



## Welcome New Members

Dr. Janice Peeler was inducted as a member of the Rotary Club of Richmond on 1st October.

Formerly an Honorary Member of the Club, Janice has been the ROMAC (Rotary Oceania Medical Aid for Children) voluntary Medical Consultant and will continue with this valuable work.

Our photo shows Janice (3rd L) being inducted by President Sue Bolton (2nd L), supported by Dr Janice Kesterton, Janice's mentor, (L) and Jenny List, Membership Chair (R).

It's picture-proof that Rotary's gender barrier is well and truly a thing of the past!





## School End of Year Recycling Project

### Cost:

Minimal      Effort: Minimal      Time: Minimal

**Education is one of Rotary's six areas of focus.**

We live in a lucky country. At the end of the school year many students discard items because they won't be needed next year or will be replaced with new ones. Schools also often have useful items they wish to get rid of. Many of these items would be of great value in developing countries. At the end of the school year we want the school community to think about the things they no longer require that could be reused and donate them to Rotary.

It also provides students a better understanding of how fortunate they are and to consider the obligation we have to help others in need. A project package is available including a draft letter for the school and poster. The DIK Store can also supply cartons if required.

We hope that your Club will take part in this project

For more information check [www.rotarydik.org](http://www.rotarydik.org) , email [dik.vic.rotary@gmail.com](mailto:dik.vic.rotary@gmail.com) or ring 0428 550574



## Letters to the Editor



Dear Clarice.

We have just received this request from Daryl Mills our Liaison Officer in East Timor. Does anyone have any contacts who may be able to assist. If so please contact me at 0428 550 574 or [dik.vic.rotary@gmail.com](mailto:dik.vic.rotary@gmail.com)

Daryl writes: *There is a drastic shortage of suture material in Timor. I'm being asked all the time... do you know of any medical supply companies would donate? I get some 'out of use by date' because they doesn't affect the suture but could use a pile of it if available... I'm told women who have just had a child in a referral hospital are being told to go to Dili to be stitched... crazy!*

David Dippie,  
Donations in Kind.





Dear Clarice,

*As a frequent speaker to Rotary and Probus clubs, I enjoyed PDG Jennifer Coburn's article "Oh no! We haven't got a data projector". May I supplement it?*

*The 20-25 minute speaker slot at Rotary is brutally short for many topics. It is a crime for a club to crib time from the speaker's slot by allowing club business, sergeant etc to exceed their designated time.*

*My worst example was at a meeting of about 15 Rotarians where the sergeant decided to ask each person present to describe briefly what they did on the long weekend holiday. You can guess the outcome.*

*Introducing the speaker is often done after the speaker slot has commenced. While the host rabbits on with the introduction, speaker time ticks away. Keep the introduction minimal, preferably before the speaker's clock starts ticking. Speakers easily lose track of their time. Give a clear signal if necessary, "Three minutes left!" (e.g. signal with three fingers).*

*Don't re-assure the pending speaker that you have everything he/she will need on the IT front. Incompatibilities are the norm, not the exception. Instead say, "Although we have our own equipment here, there's no guarantee it will all be compatible with your equipment. So come early to give us enough time to set it up in advance and de-bug it." I once believed a club's "All will be well" story and it turned out the club was using a hotel's built-in equipment which just refused to interface with my gear. These days, regardless of what I'm told by a club, I have in reserve my own laptop (sometimes two of them!), projector, speakers, extension cabling, and screen. This, and only this, has saved my bacon countless times.*

*Ask your speakers if they are using Mac gear. If yes, remind them that a Mac adaptor cable is essential to interface with your club's Windows gear. Even buy the adapter (\$30) as a stand-by in case the Mac speaker forgets.*

*Club venues (tables, seating) are often set up by the venue's people in a presenter-unfriendly pattern. The rear tables may be needlessly far from the screen, or too crowded towards the screen. Politely tell the venue to adjust the seating. You're the boss, the venue is the service provider.*

*Often tables or seats are in a bad line-of-sight to the screen. I ask the audience: "If you can't see the screen well, please move your chairs." Strangely, no-one ever does. I feel this refusal is impolite to the speaker: "We don't care whether we can see or not".*

*I am always seated at the head table. Nice! But I have an empty chair to my left, and a couple of other empty chairs opposite. Meanwhile other club members crowd the other tables, chatting and enjoying themselves. I wonder, "Have I got leprosy?"*

*Gift: You should see my collection of Rotary biros! Call me a pig but I prefer a bottle of red. Call me vain but I do also appreciate a formal letter later saying thanks for all my trouble and for keeping the club entertained.*

*Finally, if your club has fewer than 10 members likely to show up, ask yourself whether you are being fair to a speaker (who may get up early and travel 20km to entertain your tiny group). The smallest Rotary meeting I have spoken at was four members. At another club, there were about six, and even then, they managed to more or less ignore me when I arrived. If your club can't muster ten members, do something about it!*

Best wishes,  
Tony Thomas, RC Central Melbourne Sunrise.

Clarice Replies:

This is one of the longest letters we have received, Tony, but all your points are pertinent. Attention to detail is the key to a successfully run Rotary Club.

BTW, I found a nice photo and a sad story about you and your Mac on the Web. We also use Macs to produce "Networker": I couldn't survive without Drag'n'drop!



*The face of Tony Thomas is reflected in the screen of his fake MacBook Air, next to a genuine Apple MacBook computer. Photo: Simon Schluter*

**Tony Thomas is a (sort of) retired journalist, whose articles appear from time to time in "Quadrant". He has spoken to about 70 Rotary and Probus clubs on the former East Germany's secret police and currently, on Burma's democracy leader Aung San Suu Kyi.**



# Notices and Events

## NOTICES

For a full Notices & Events calendar, visit the following link:

[http://www.rotarydistrict9800.org.au/notices\\_and\\_events](http://www.rotarydistrict9800.org.au/notices_and_events)

### PDG Jeffrey Bird

The Board, Past Governors and all members of Rotary District 9800 are deeply saddened by the passing on October 6th 2012 of their esteemed Past District Governor Jeffrey Bird. A gentleman in every sense of the word and a true believer in Service Above Self who will be greatly missed. Deepest sympathy is extended to Elaine and family.



## ROTARY'S GOT TALENT

An exciting new 'Rotary's Got Talent' competition, to be part of the Dinner Dance, will give every Club a chance to show off their talents at the Albury Conference in March. There is a great first prize donated by Rivera Properties Metung: A Metung Getaway Package including: two nights for 4 people in a holiday unit at McMillans of Metung; Guided tour and Golf Package at Kings Cove Metung with 4 rounds of golf, electric carts, club hire and refreshments; and Director boat charter for a cruise on the Gippsland Lakes – valued at \$1,000. A great way to explore Gippsland's Riviera.

The Entry Form and competition rules are at [http://www.rotarydistrict9800.com.au/Images/rotary\\_talent.pdf](http://www.rotarydistrict9800.com.au/Images/rotary_talent.pdf)

Entries need to be submitted before 15 October 2012.

Auditions will be held in November. The 'Rotary's Got Talent' Committee can answer any further questions.

Ian Stoney; Mobile: 0400 209 802 [ifxs@aapt.net.au](mailto:ifxs@aapt.net.au)

Noel McInnes; Mobile: 0418 310 007 [noelmci@openwindows.com.au](mailto:noelmci@openwindows.com.au)



## EVENTS

### OCTOBER 2012

#### 12th Oct CHARITY AUCTION AND DINNER

KOOYONG LAWN TENNIS CLUB 489 Glenferrie Road, Kooyong. Friday 12 October 2012 6.30pm for 7pm

\$95 per ticket (GST incl). Bookings of 10 tickets or more \$86 per ticket

THREE COURSE DINNER including quality wines, beer and soft drinks LIVE AUCTION AND SILENT AUCTION. Music featuring "BackDated"

RSVP 30 SEPTEMBER 2012 Neville Taylor 0400 169 866

[neville.taylor5@bigpond.com](mailto:neville.taylor5@bigpond.com)



#### 12th Oct Hat Day at City Square

The official celebrations of Hat Day will be at City Square in Melbourne at 11.30am-1.30pm on Friday 12th October. The Millinery Association of Australia and City Hatters will present hat parades, the Royal Australian Air Force Band and Charles Bobongie will provide musical entertainment, people can take part in hat making workshops with Hatmobile, and also win a variety of prizes.

If you would like any more information, please visit the website [www.hatday.com.au](http://www.hatday.com.au) Alternatively you can contact Terry Davies, Corporate Manager, (02) 8837 1900 or [terrydavies@australianrotaryhealth.org.au](mailto:terrydavies@australianrotaryhealth.org.au)







**14th  
Oct**

## Yarra Walk

Sunday, 14th October, 10.00am-Midday

Come for a walk with the Rotary Club of Richmond along a beautiful section of the Yarra River, led by Yarra Riverkeeper, Ian Penrose. Learn about the Yarra River & parkland, their history & the wonderful life they support.

Stay for a BBQ lunch. BYO drinks, utensils etc.

COST FOR THE DAY: \$10 PP. Children 5 yrs & under free.

BOOKINGS: Kristen Widdop - M: 0419 533 904

E: [kristen\\_widdop@hotmail.com](mailto:kristen_widdop@hotmail.com)



**15th  
Oct**

## Rotary Community Service Awards

Gala Event: Monday October 15

The Rotary Community Service Awards is a great initiative from Rotary that is specifically designed to acknowledge and promote the great partnerships that community groups have with those organisations that support them i.e. service clubs, sponsors, corporations, individuals etc.

We will be awarding \$30,000 in cash prizes and \$100,000 in pro-bono prizes to community groups at this year's Community Service Awards event to be held on Monday 15th October 2012

6:30 pm @ Crown Palladium

All the details, including the nomination process, are on the [Rotary Community Service Awards Website](#)

For bookings, please visit our [Booking Page](#)



**18th  
Oct**

## GIVE BACK TO THE MAC

The Rotary Club of Melbourne Park presents a social event raising money and awareness for the Peter MacCallum Foundation cancer treatment and research.

Thursday 18th October @ Next Level - Hotel Barkly (St Kilda) from 7:30pm till late. Next Level is a fantastic venue with kind and generous management

For Entertainment, Luke O'Connor (Steelbirds) will perform live with DJ Mark John then DJ Jean-Paul to follow.

A photo booth has been donated by Solution Entertainment (thank you) which puts you in charge of getting some cool shots.

Tom Stevens (Close Up Magic) will blow your mind with his magic tricks. Finger food will impress

Dress up or dress down. The most important thing is that you make the effort to come. This is your way of 'giving a bit back' and having a good night out at the same time.

Pre-sale tickets are \$20 and can be purchased online @ <http://www.trybooking.com/Booking/BookingEventSummary.aspx?eid=33747>

or facebook <http://www.facebook.com/#!/events/501060833238554/>

or call Linden on 0439653325 and they will be delivered to you.



**19th  
Oct**

## CHARITY GOLF DAY - RC NORTH BALWYN

FRIDAY OCTOBER 19, 2012 - PROCEEDS TO FARESHARE

FREEWAY GOLF COURSE, COLUMBA STREET, NORTH BALWYN.

Tee Times 9.45 am to 1.15 pm (Players will be advised of starting time week prior)

Presentations around 5:30 pm in Hospitality Marquee

Stableford, Mens and Ladies, 18 Holes

Prizes: Winner, Runner Up, Nearest the Pin, Longest Drive.

Take Your Odds on 18th Par 3, Auctions and Raffles.

A Fun Day for Regular and Social Golfers.

Entries close 5th October 2012, COST \$75.00 per player.

Cheque payable to: Rotary Club of North Balwyn,

P.O. Box 135, North Balwyn 3104. Or cash on the day.

More Info: Adrian Ranson: 0418 177 100 or 9460 1822.

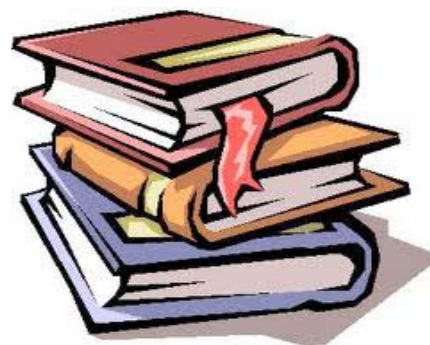




## OCTOBER 2012

### 20-21 Oct ANNUAL BOOK FAIR

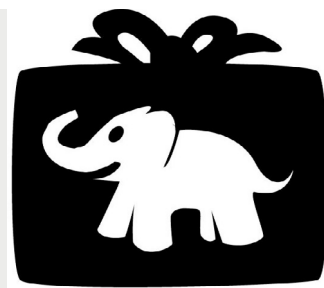
The Rotary Club of Albert Park will be holding its annual Book Fair on Saturday, 20th and Sunday, 21st October from 10am to 4pm. The fair will be held in conjunction with Albert Park College's Art Show, held at 83 Danks Street, Albert Park. There will be thousands of "pre-loved" books of every description for children and adults. Further information, see <http://www.clubrunner.ca/Data/9800/4551/HTML/176775/BookSaleA3FINAL.pdf>



27th  
Oct

**WHITE ELEPHANT SALE** - Rotary Club of Melbourne  
Saturday 27th October at the Abbotsford Convent in Collingwood from 8am.

Quality and Designer second hand clothing including some vintage pieces, handbags and shoes, Bric a Brac, china, pottery, crystal and glassware, antique Japanese and Chinese bowls, jewellery, general household goods. The sale will be in the Linen Room at the Convent. There is a gold coin admission to the Slow Food Market on the day. Enquiries to Maryla Juchnowski 0422 068 229



28th  
Oct

**Coffs City Rotary Golf Challenge** - 28 October

The best performing Rotary team will win \$1,000 for their clubs charity account.

All players and teams will be eligible for a host of other prizes including a hole in one prize of \$10,000 for their nominate charity.

Contact Peter Lindsay

PO Box 2079, COFFS HARBOUR NSW 245

Mob 0418 280 604 [plindsay@achieveoutcomes.com.au](mailto:plindsay@achieveoutcomes.com.au)



28th  
Oct

**CAMCARE CONCERT** - Rotary Club of Hawthorn

The Grand Camcare Concert will be held on 28th October this year at Genazano, 301 Cottham Rd, Kew.

It promises to be an outstanding concert once again.

Tony Charlton has arranged a talented and diverse group of musicians and entertainers for the event who include:

*The Royal Melbourne Philharmonic Choir*

*Allan Kogasovski, piano: Sally Cooper, Violin*

*Blackburn High School Band*

*Paul Jennings Comedian and impersonator*

*Rebecca Chambers, Classical pianist and former Young Australian of the Year*

At only \$25.00 or \$50 family this represents incredible value.

Proceeds will be shared between Camcare and club revenue.

Please call Noel Halford on 9889 1519 or 04118 901 to book.



## NOVEMBER 2012

10th  
Nov

**Rotary Club of Glen Eira 25th Anniversary**

Saturday 10th November 2012

Kooyong Tennis Centre, Glenferrie Road, Kooyong

\$85 per person Pre-Dinner Drinks at 6pm for 6.30pm 3 course buffet

Lots of fun, music and entertainment, together with old memories, and areunion with past members, and members from our friendship club in Japan, the Rotary of Ogaki-West. For more information, call Geoff Asher 9571-3833 or John Strong 9836-9165

Visit our website [rotarygleneira.org.au](http://rotarygleneira.org.au)







## NOVEMBER 2012

**11th  
Nov**

### **CITY2SEA**

SUNDAY 11th NOVEMBER 2012

THE CITY2SEA 14km FUN RUN STARTING AT THE ARTS CENTRE, AROUND ALBERT PARK LAKE AND FINISHING BY THE SEA AT ST KILDA.

Rotary District 9800 has again been asked again to source and manage the 700 volunteers for this great event. Let us know 'asap' that you would like to be a part of this great event.

What are the benefits of participating in City2Sea 2012?

1. **Raise funds for your valuable projects ie 20 volunteers = \$600!**
2. **Involves your Club as a team in a fun event**
3. **Promotes Rotary to 15,000+ participants and spectators.**

Contact Sandi Fulcher, City2Sea Event Coordinator

Mobile: 0416 063 434 or Work: 9686 0688

Email: [sandi\\_fulcher@hotmail.com](mailto:sandi_fulcher@hotmail.com)

<http://www.rotarydistrict9800.org.au/site/1164/We%20Want%20You%20As%20A%20Volunteer%20for%20The%20City2Sea%20Fun%20Run%202012%282%29.pdf>

**11th  
Nov**

### **ANNUAL PAINT IN THE PARK**

November 11th. Glen Eira Artists Society and Rotary Club of Caulfield Register by email [glenart2@gmail.com](mailto:glenart2@gmail.com), and include a short Artist's Statement and Resumé Briefing at 10.00 am at the Rotunda, Caulfield Park



**14th  
Nov**

### **PAUL HARRIS BREAKFAST**

Chief Commissioner Ken D. Lay APM, Victoria Police "Contemporary Issues in Policing"

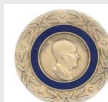
Wednesday, 14th November 7.15 for 7.30 till 9.00am

The RACV Club \$60.00 (incl. GST)

FOR FURTHER INFORMATION PLEASE CONTACT Marjorie Gerlinger, PH: 9807 8320 / 0419 302 109 FX: 9888 3692

Email: [marbern@bigpond.net.au](mailto:marbern@bigpond.net.au)

Booking Form [http://www.rotarydistrict9800.com.au/Images/PHF\\_Breakfast\\_bookingflyer.pdf](http://www.rotarydistrict9800.com.au/Images/PHF_Breakfast_bookingflyer.pdf)



**25th  
Nov**

### **GSE WELCOME HOME FUNCTION**

THE D1080 UK CAMBRIDGE-NORWICH GSE TEAM RETURNS ISUNDAY 25 NOVEMBER 2012

PUT THIS DATE IN YOUR DIARY

TO ENSURE YOU CAN BE PART OF THIS EXCITING EVENT

PITRUZZELLO ESTATE, 25 DEVERALL ROAD SUNBURY/GISBORNE 12:00PM FOR 12:30PM START

MORE DETAILS AND BOOKING ARRANGEMENTS WILL BE ANNOUNCED SOON



## Do you have a letter for Clarice?

### **Contact the Editor**

Do you have a letter for Clarice?  
Is something on on your mind?

Send your thoughts to her email address at  
[clarice@rotarydistrict9800.org.au](mailto:clarice@rotarydistrict9800.org.au)



## **ROTARY DISTRICT 9800 Events Calendar**

For a full Notices & Events calendar, visit the following link:  
[http://www.rotarydistrict9800.org.au/notices\\_and\\_events](http://www.rotarydistrict9800.org.au/notices_and_events)

To submit Notices & Events, please send Clarice all the details at:  
[clarice@rotarydistrict9800.org.au](mailto:clarice@rotarydistrict9800.org.au)



# Networker

Rotary District 9800

A publication for  
Rotarians and  
all community  
minded people

## DG Weekly Message

### Connecting with the Community

Last week I mentioned two expressions used by the Reverend Tim Costello that really caught my attention when he addressed the 40th Anniversary celebrations of the Rotary club of Balwyn. The expression "Ethics in Action" was the subject of my comments last week and "connection with the community" is very much what I want to talk about this week.

One of the key elements of the Rotary International Strategic Plan is to enhance our public image. For too long Rotary and Rotarians have been content in the knowledge that we are "doing good in the world". However we can do more if we have public support and encouragement. This aspect of our strategic focus is to promote our core values while emphasising our vocational service and promoting networking opportunities and signature activities. The opportunity of harnessing and showcasing these objectives in this Rotary month of Vocational Service was highlighted this week with the staging of the innovative third annual Community Service Awards hosted by the Rotary Club of Southbank. Our core values of service, fellowship, diversity, integrity and leadership were comprehensively demonstrated on the evening.

What a night of nights. A large turnout for a very professionally



District Governor Dennis Shore and Lynda

staged event was rewarded by great entertainment and the satisfaction of learning about great community service organisations, helped and supported by Rotary. These organisations work every day to make a real change in the community and it is positive for Rotary to showcase some of the wonderful work being done by these organisations. Forty community groups and 44 community partners participated and awards were presented in the following areas:

**Recreation and Arts** — Inspiring dreams and achievement

**Youth** — Supporting our future

**Homelessness** — Working to meet our communities most basic needs

**The Environment** — Our future, our responsibility

**Community Health, Mental Health** — Providing care, hope and support

**Aged Care and Community Support** — Serving our senior citizens and serving our community in times of emergency

**Vocational Support and Community Leadership** — Leading the way by making a difference providing skills and creating positive pathways

**Drugs, Gambling & Alcohol Prevention** — Helping those in times of need

### In this Issue



- 03 Vocations in Service
- 04 Vocational Service and Training
- 05 Beds, Beds and More Beds
- 06 Murrumbidgee Market
- 07 Various
- 08 GSE in the News
- 08 Welcome New Members
- 09 City2Sea Update
- 10 Notices
- 11 Events

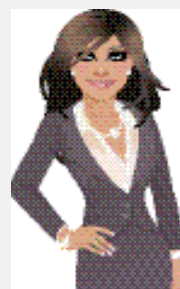
### Contact the Editor



#### Clarice Caricare

Do you have a letter for Clarice? Is something on your mind?

Send Clarice an e-mail at [clarice@rotarydistrict9800.org.au](mailto:clarice@rotarydistrict9800.org.au)



### October is Vocational Service Month







*The Choir of Hope and Inspiration were among the stars of the Community Service Awards*

The entertainment recognised great support from Rotary as well. The Choir of Hope and Inspiration, devised, created and on the evening conducted by founder and Rotary Club of Southbank member Jonathon Welch, were right at their peak and provided splendid renditions of original compositions created for the Choir. Fantastic! The Choir was itself a previous recipient of a major Rotary community service award.

We were also treated to the brilliant voice and very personable presentation by Nicholas Jones, who was taking a night off from his regular role in "South Pacific" at the Princess Theatre. Nicholas hugely impressed all with wonderful interpretations of "Younger than Sunshine", from South Pacific; "Bring Him Home", from Les Miserables; and "This is the Moment", from Jekyll and Hyde. And how does Nicholas relate to Rotary? Nicholas was the recipient of the Sleath Lowry Award, a scholarship provided by the Rotary Clubs of Melbourne and Beaumaris to the most outstanding vocal artist at the Victorian College of the Arts. He has also performed at Annual District Conferences in Myrtleford and Geelong and at many other Rotary events.

The Community Service awards recognise and celebrate the many organisations and individuals who give of their time and financial resources to support those less fortunate or in need and to improve our community. Rotary brings together community service agencies and businesses and organisations they support.

This is Rotary at work - connecting communities, showcasing the work of community service organisations but also recognising businesses and organisations that have a commitment beyond their shareholders to corporate/business social responsibility.

The vocational service Avenue of Service is about promoting high ethical standards in businesses and professions and businesses operating in accordance with Rotary's principles. By encouraging and recognising businesses that support community service organisations, Rotary is encouraging businesses to accept and actively participate in areas of corporate social responsibility. Businesses that are proactive in the area of corporate social responsibility and who have supported community service organisations participating in the awards, include many of Australia's leading companies, companies like NAB, Coles, Toll, Kraft, GE, Bakers Delight and ConnectEast. There are also philanthropic Foundations providing support such as Planet Wheeler and Portland House. Other leading companies such as Linfox, Officeworks and many others provided significant financial support for the event.

The judging panel selected Hanover as the major award recipient with Clown Doctors and Whitelion sharing the runner up award.

By encouraging and recognising those businesses that support community service groups it will set a standard for more businesses to come on board and encourage individuals within businesses to volunteer their time and energy, possibly through Rotary but certainly in support of the community.

Rotary has a record of partnering with mission specific community service groups; often assisting in their establishment and providing initial funding and mentoring for them to expand their effectiveness. Rotary endorses activities by clubs to develop and maintain support and cooperation with other organisations provided that those organisations have activities consistent with Rotary goals and purposes.

Rotary is about connecting with and serving the community, be it local or international. There are many ways in which to achieve this connection. If clubs can find a way to leverage the value of the support through businesses we have an opportunity to comprehensively satisfy the objectives of Rotary's second and third Avenues of Service - Vocational Service and Community Service.

As I make my visits to clubs I see regular examples of clubs using their vocational, organisational and leadership capabilities, working with other community organisations to achieve great outcomes that benefit the community. Rotary – It's amazing!

**Dennis Shore**  
District Governor



# Vocations in Service: Week 3

By Mike McFarlane, Chair Vocational Service



Rotary's "Second Avenue of Service" can be implemented more wholly by actively focusing on the diversity and strength of our members' vocations, empowering them to seek to provide more opportunities for their Clubs and District to work together on "ViS" programs. By harnessing the professions, trades, business acumen and knowledge residing collectively in our members we can identify and implement additional Club driven programs with the support of District; so why not recognise those Rotarian who have done exactly that ..... making an outstanding contribution to Rotary through their vocation.

The Vocational Service recognition program offers Clubs the opportunity to nominate outstanding Australians, either Rotarians or non-Rotarians, for multi-tiered Awards across Club, District, Rotary International and our uniquely Australian Honours. It just takes a little time and effort to embark on making one of your local community or members a recognised Rotary or Australian champion.

At Club level you can easily create your own Vocational Service Award by working with your Vocational Service Chair and Club President to honour one of your own with the:

- Club President's Vocational Service Award
- Club President's Vocational Volunteer Award

This year the traditional District Awards will be supplemented by the inaugural District Governor's Vocational Service Award, to be selected from the respective Club Presidents' Vocational Service Award recipients for:

- The District Governor's Vocational Excellence Medal
- The District Vocational Volunteer Award

Also, Rotary International has sought one nomination from each District for an RI Vocational Service Leadership Award.

This Award is designed to recognise a Rotarian who has made a significant impact in advancing vocational service, but does not hold district or international leadership position. It is wonderful opportunity for us to honor a Rotarian in our district who is actively committed to vocational service and may otherwise go unrecognised. Only one Rotarian per district may receive the Vocational Service Leadership Award each year and Rotarians may only receive this award once; however, nominations by the DG close late October '12.

Last but not least is the recognition bestowed by The Australian Honours system.

Australian honours are unique in that they were designed for the community to make nominations; the honours' system is free of patronage or political influence and anyone can nominate an Australian citizen for an honour.

Honours help define, encourage and reinforce national aspirations, ideals and standards by identifying role models. We give honours to recognise, celebrate and say thank you to those who make a difference, for their excellence, achievement or meritorious service; Australians who achieve their best and those who serve others..... very Rotarian!

Rotarians are always talking about increasing visibility and membership but rarely in a very public display rewarding and honouring its members for their inspirational vocational endeavours, with the exception of our Paul Harris Fellow Awards.



So why not tell Rotary and the outside world that District 9800 has an abundance of members who are Vocational Service stars? Don't just think about it or don't just hope that the world know who they are, but just do, do something by recognising them this year.



# A New Approach to Vocational Service and Training

By Wilfrid J. Wilkinson, Foundation Trustee Chair

In 2013, all districts will have the opportunity to support vocational training teams with Rotary Foundation grants. These teams of Rotarian and non-Rotarian professionals will travel abroad to meet a humanitarian need, either by teaching local professionals about a particular field or learning more themselves.



VTTs, like Group Study Exchanges, can be sponsored by district grants, which have no area of focus requirements. Districts 6200 and 9600 used district grants to organize a VTT exchange dealing with the environmental impact of oil spills. VTTs can also be sponsored by global grants.

Some districts have expressed disappointment that the Foundation will no longer support the GSE program. However, many districts have had difficulty finding professionals who meet the program requirements, forcing the Foundation to grant dozens of exceptions to the GSE guidelines every year. Under Future Vision, districts can still sponsor such activities through district grants and search for partners on the District Grant VTT Partner Forum on LinkedIn.

Unlike GSEs, VTTs have no restrictions on participant age or length of training. They also offer an opportunity for the hands-on activity with lasting impact that many GSE participants have requested. The GSE program established the Foundation's commitment to vocational training; VTTs are taking that commitment to a new, more dynamic level.

I encourage every district to take advantage of the humanitarian service that can be generated by a VTT, once Future Vision is fully introduced on 1 July, 2013. This doesn't mean that your Foundation won't allow GSE teams. They will still be funded, but with the money allocated to the district, and only when the district committee feels that it will be a meaningful exchange.



*Women work on projects during a tailoring class, which teaches local women a vocational skill, and provides cheap school uniforms and mosquito nets for community members. Providing mosquito nets is one element of The Humanitarian Project against Malaria, Poverty, Hunger and Illiteracy at Kasamu in Kyali Mpigi District. The project is made possible with a Health, Hunger and Humanity (3-H) Grant from the Rotary Foundation, the Rotary Club of Muyenga, Uganda and the Rotary Club of Genk-Noord, Belgium. The major aims of the project include fighting malaria, improving general health, economic development, assisting farmers, helping orphans and the poor and fighting against illiteracy.*

# BEDS - BEDS - AND MORE BEDS

Last year the team at the West Footscray Donations in Kind store thrilled the procurement people at St Vincent's Hospital by removing almost 90 electric beds that were being replaced with new ones. They all ended up overseas providing beds where previously there were none.

Because we did such a great job, Rotary is now their chosen recipient for future replacements. We have recently taken 90 beds from St Vincent's Mercy and these have all been allocated as well as 6 maternity beds now on their way to the Baucau Hospital because they had no specialist maternity beds

We now have another huge task as this time we will get 150 beds from St Vincent's but here's the catch - they all have to be collected in three days as the new beds are delivered to the hospital.



This will happen on Tuesday 13th, Wednesday 14th and Thursday 15th November and to do this we need help.

About 100 of these beds have already been allocated and all being well we will pack these directly into the 40ft shipping containers to save a lot of double handling. The others will all go back to the DIK store for later allocation. It means that in less than 12 months, almost 350 beds that would go to the metal recycler or land fill will find new homes where they are certainly needed.

Can you assist please? We know that these are normal work days for many Rotarians but there are many who do not have this 9 -5 routine to worry about. Think of it as a replacement for that visit to the gym or instead of some gardening or a golf game for this week.

If you can give us your help for one day, several days or even a few hours, it will all help.

Please advise Bob Glindemann at [bob.glindemann@bigpond.com](mailto:bob.glindemann@bigpond.com) or 0418 102 702 so that we can plan the work force for each day.

This is a terrific opportunity for some good old fashioned hands on Rotary work, some great fellowship that delivers terrific benefit to people in need and certainly enhances the reputation of Rotary.







# Murrumbeena Community Market

*By Heather Welsh, RC Caulfield*

This was an extremely successful event on 6th October, both financially and for the connections made between visitors. It was a very friendly atmosphere with the Bookroom a hive of activity. It is great to see how various participants have gained in self confidence and the amount of fundraising undertaken by the various community groups and not for profit organisations.

Proceeds from the Money Spinner go into Caulfield Rotary Club's Emergency Fund Account. This account is drip fed so that if and when a natural disaster occurs in Australia the Club is in a position to immediately send funds to a Rotary recovery endeavour, instead of frantically trying to pull together a fundraiser event to extract dollars from the same pockets that other organisations are trying to fundraise from at the same time for the same purpose. The proceeds will also mean that the Club will be able to fulfil its obligations to the region in Papua New Guinea which its has adopted under the Rotarians Against Malaria program, assist locally and internationally with some educational projects, help pay or some of the food for the Annual Festive Season Lunch for the recipients of the Council's Delivered Meals Service. There should also be enough to help fund the Club's first beehives, now that it is registered as a beekeeper.

The market has been a wonderful opportunity for people and groups to connect in ways that RCC had not even considered. It has been particularly gratifying to see the way in which the Yooralla clients have flourished both in selling their produce and gaining work experience in hospitality through the Market Cafe. It is a great opportunity for vendors to gain self-confidence in dealing with the general public and to have an outlet for their products which might not otherwise be available. For many of the community groups and not for profits, it has been a chance to self-help through fundraising directly and telling people about the work which they do. Visitors seem to really enjoy the whole atmosphere of the Market too.

Markets encourage the entrepreneurial spirit, independence, individuality and provide diversity in choices for consumers.

The Market is also a wonderful opportunity for the Rotaractors to undertake hands on community work.



*Photos by PE Faye show the bookroom, the sausage sizzle, and naturally, the Club's favourite activity: counting the money!*



## Community Radio

The Rotary Club of Canterbury has for some 15 years sent a team of Rotarians and friends to different islands in the Philippines to initially undertake eye screening. Now the team also has ear and teeth screening as well. The team links up with local Rotary clubs and other medical professionals who undertake the necessary medical procedures free to the local community.

This year's team departs this Saturday.

The podcast below covers the background and a report back to our club of last year's trip

<http://www.canterburyrotary.org/download/attachments/131111/Eyescreening2011%20DP%2020120929%20Web.mp3>



## Exchange Rates

When allocating funds for Global Grants or funding the renewal of their membership of the Paul Harris Society, Clubs and Rotarians need to convert Australian dollars into the equivalent in US dollars. In some cases the wrong RI exchange rate is being used.

The current RI exchange rate between the A dollar and the US dollar is readily available on the RI web site under RI Exchange Rate:

<http://www.rotary.org/en/AboutUs/SiteTools/Search/Pages/ridefault.aspx?k=exchange%20rates>

The current rate for October is 0.97 ie each US dollar buys 97 cents Australian currency, or \$AUS1.00 buys US\$1.0309



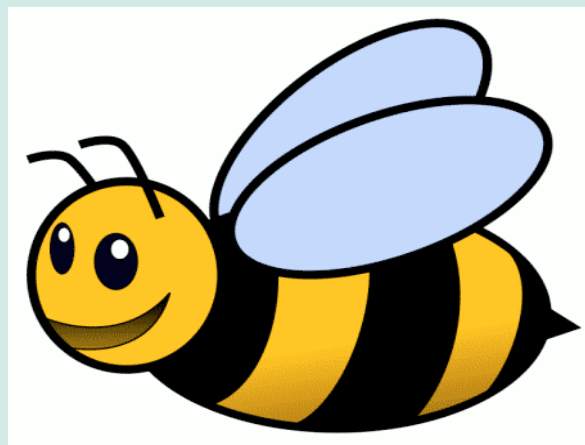
## Bee Swarm Season

By Heather Welsh

Spring is bee swarm season and that many local Councils maintain contact details of local swarm collectors and that the Victorian Apiarists' Association has swarm collectors listed on their website:

[www.vicbeekeepers.com.au/](http://www.vicbeekeepers.com.au/)

Caulfield Rotary Club implores you not to destroy the swarms: they are a precious resource for horticulture, agriculture and urban gardens and need to be re-located.







## GSE Member in the News

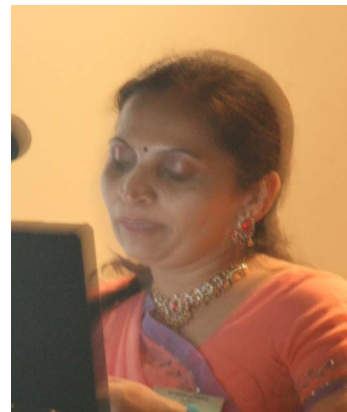
Mugdha Fadke was a GSE Team Member from India last year. She has obviously been busy since her return home, as this newspaper clipping shows.

### Woman Delivers Quadruplets in Akola

*District Correspondent, AKOLA, Oct 4th.*

In a rare instance, a pregnant woman gave birth to four children, including three boys and a girl, at a local Fadke Hospital on Wednesday. is said to be the only incident reported in the city in the last 25 years. Birth of twins is a normal phenomenon and birth of triplets is also not that rare, but a woman delivering quadruplets is.

Dr Sandeep and Mugdha Fadke of the hospital informed the mother, Arpana Giridhar is a resident of Royal Residency in Jatharpeth. She gave normal birth to three sons and a daughter in the wee hours of Wednesday. Arpana weighed on 50 Kg when she delivered. Condition of all the infants is stable.



It



Dr Sandeep Fadke said that he had carried out deliveries with twins and triplets many times but this was the first time in last 24 years that quadruplets were born.

Dr Mugdha and Sandeep Fadke further informed that, statistically, in 80 conceptions made only one pair of twins is conceived and triplets are conceived once in 6,400 conception. The quadruplet is even rarer as it occurs once in 5,12,000 conceptions.

## Welcome New Members

Caulfield Rotary Club welcomed Dr Nikolai Faizouline as a new member. Dr Nikolai is a Veterinary Scientist with a special interest in apiculture. He will supervise the next phase of the Club's Bee Aware Project. His wife, Diana, who will assist with the project, was welcomed as an Honorary Member. Photo below left of Nikolai with President John Lord.

Eammon Hamilton was inducted at The Rotary Club of St Kilda meeting on Tuesday 9th October. Eammon is seen with President Julia Topliss.





# City2Sea

## Volunteer Update

With only 3 weeks left to City2Sea on Sunday 11th November 2012, we have



- 200 volunteers of the 453 needed.
- 24 Clubs providing support compared to 40 Clubs last year.
- The Clubs that do participate will share in \$17,800 in donations. That equates to selling over 8000 sausages!

Thank you to the Clubs that have committed their support.

- We need more volunteers – we still need 253!
- What project does your Club or community organisation need money for? \$30 per person!
- Clubs that provide 20+ volunteers will have the opportunity to earn \$50 per person – conditions apply.
- It is easy money, with minimal work and organisation, it's a fun ½ day and together we are promoting 'Rotary'!

Contact Sandi Fulcher: [sandi\\_fulcher@hotmail.com](mailto:sandi_fulcher@hotmail.com) 0416 063 434 or 9686 0688





# Notices and Events

## NOTICES

For a full Notices & Events calendar, visit the following link:

[http://www.rotarydistrict9800.org.au/notices\\_and\\_events](http://www.rotarydistrict9800.org.au/notices_and_events)

### ROTARY'S GOT TALENT

An exciting new 'Rotary's Got Talent' competition, to be part of the Dinner Dance, will give every Club a chance to show off their talents at the Albury Conference in March. There is a great first prize donated by Rivera Properties Metung: A Metung Getaway Package including: two nights for 4 people in a holiday unit at McMillans of Metung; Guided tour and Golf Package at Kings Cove Metung with 4 rounds of golf, electric carts, club hire and refreshments; and Director boat charter for a cruise on the Gippsland Lakes – valued at \$1,000. A great way to explore Gippsland's Riviera.

The Entry Form and competition rules are at [http://www.rotarydistrict9800.com.au/Images/rotary\\_talent.pdf](http://www.rotarydistrict9800.com.au/Images/rotary_talent.pdf)

**Entries need to be submitted before 15 October 2012.**

Auditions will be held in November. The 'Rotary's Got Talent' Committee can answer any further questions.

Ian Stoney: Mobile: 0400 209 802 [ifxs@aapt.net.au](mailto:ifxs@aapt.net.au)

Noel McInnes, Mobile: 0418 310 007 [noelmci@openwindows.com.au](mailto:noelmci@openwindows.com.au)



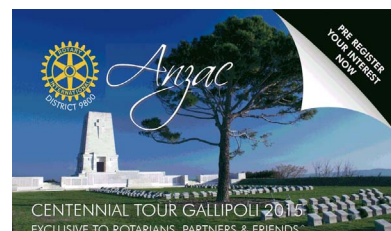
### ANZAC CENTENNIAL TOUR GALLIPOLI 2015

A project of the Rotary Club of Balwyn in conjunction with Rotary District 9800 Australia and the Rotary Club of Göksu, Istanbul and Rotary District 2420 Turkey Rotarians and Partners from Australia and New Zealand are invited to register your interest in participating in this special event. Since 2005, the Rotary Club of Balwyn and the Rotary Club of Göksu have co-hosted ANZAC Peace Tours. The 2015 Centennial Tour will comprise a 14 night package of 7 nights in Istanbul discovering modern and ancient Turkey followed by 7 night luxury cruise participating in ANZAC celebrations and visiting the Greek Islands.

To avoid disappointment you can secure your place today by paying a fully refundable deposit of only \$250 per person.

Please email us at: [Groupsadmin@aptouring.com.au](mailto:Groupsadmin@aptouring.com.au) or mail to: P.O. Box 118, Hampton, Vic. 3188.

For more information Call APT Groups on 1800 655 440 [www.balwynrotary.org.au](http://www.balwynrotary.org.au)



### LAPTOP COMPUTERS WANTED

World of Difference, Rotary Club of Echuca and Campaspe College of Adult Education are working together....In October 2012 10 students will have the opportunity to immerse themselves in the culture, history and daily life of Cambodia. Laptop computers are high on the list for donations to take for the projects that they will volunteer at.

If you have any laptops that are now no longer used please let us share them with young students and teachers who would treasure them.

Contact Bronwyn Stephens to arrange drop off or collection: 0410 32 4537. [www.wod.org.au](http://www.wod.org.au)



### CHANGE OF VENUE

**Rotary Club of Werribee** now meets at Santini's Restaurant, 102 Watton St, Werribee.

**Rotary Club of Caulfield** now meets at BARCELO café, 312 Glenhuntly Rd, Elsternwick

**The RC Kyneton** is now meeting at: The Piper Street Hotel, 84 Piper Street Kyneton

**Webmaster Stuart encourages other clubs to check their meeting locations on the district website.**



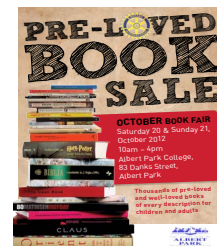


## EVENTS

### OCTOBER 2012

#### 20-21 Oct ANNUAL BOOK FAIR

The Rotary Club of Albert Park will be holding its annual Book Fair on Saturday, 20th and Sunday, 21st October from 10am to 4pm.  
The fair will be held in conjunction with Albert Park College's Art Show, held at 83 Danks Street, Albert Park.  
There will be thousands of "pre-loved" books of every description for children and adults. Further information, see <http://www.clubrunner.ca/Data/9800/4551/HTML/176775/BookSaleA3FINAL.pdf>



#### 27th Oct

**WHITE ELEPHANT SALE** - Rotary Club of Melbourne  
Saturday 27th October at the Abbotsford Convent in Collingwood from 8am.  
Quality and Designer second hand clothing including some vintage pieces, handbags and shoes, Bric a Brac, china, pottery, crystal and glassware, antique Japanese and Chinese bowls, jewellery, general household goods.  
The sale will be in the Linen Room at the Convent. There is a gold coin admission to the Slow Food Market on the day.  
Enquiries to Maryla Juchnowski 0422 068 229



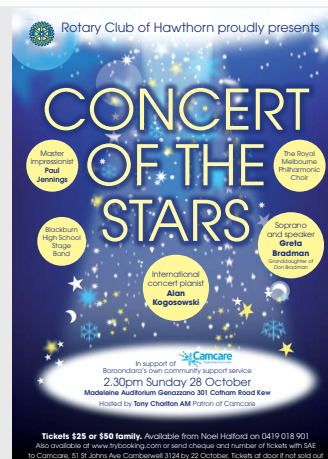
#### 28th Oct

**Coffs City Rotary Golf Challenge** - 28 October  
The best performing Rotary team will win \$1,000 for their clubs charity account.  
All players and teams will be eligible for a host of other prizes including a hole in one prize of \$10,000 for their nominate charity.  
Contact Peter Lindsay  
PO Box 2079, COFFS HARBOUR NSW 245  
Mob 0418 280 604 [plindsay@achieveoutcomes.com.au](mailto:plindsay@achieveoutcomes.com.au)



#### 28th Oct

**CAMCARE CONCERT** - Rotary Club of Hawthorn  
The Grand Camcare Concert will be held on 28th October this year at Genazano, 301 Cottham Rd, Kew..  
It promises to be an outstanding concert once again.  
Tony Charlton has arranged a talented and diverse group of musicians and entertainers for the event who include:  
*The Royal Melbourne Philharmonic Choir*  
*Allan Kogasovski, piano: Sally Cooper, Violin*  
*Blackburn High School Band*  
*Paul Jennings Comedian and impersonator*  
*Rebecca Chambers, Classical pianist and former Young Australian of the Year*  
At only \$25.00 or \$50 family this represents incredible value.  
Proceeds will be shared between Camcare and club revenue.  
Please call Noel Halford on 9889 1519 or 04118 901 to book.



### NOVEMBER 2012

#### 8th Nov OAKS DAY LUNCHEON RC Essendon North

Thursday 8th November From 11am – 4pm  
Fredricks Restaurant, 980 Mt Alexander Rd, Essendon  
• Free glass of champagne on arrival • 2 course meal \$45 per head •  
Drinks at bar prices • Devonshire afternoon tea  
Awards for: Lady of the Day – Best HatSweeps, Lucky Tab Tickets, Lucky Door Prize  
Bookings are essential: Contact: Barry Coleman 0427 852 062, Coral Thompson 9376 8625, Fredricks: 9374 1255 or via Email [enquiries@fredricksrestaurant.com.au](mailto:enquiries@fredricksrestaurant.com.au)







## NOVEMBER 2012

**10th  
Nov**

### Rotary Club of Glen Eira 25th Anniversary

Saturday 10th November 2012

Kooyong Tennis Centre, Glenferrie Road, Kooyong

\$85 per person Pre-Dinner Drinks at 6pm for 6.30pm 3 course buffet

Lots of fun, music and entertainment, together with old memories, and areunion with past members, and members from our friendship club in Japan, the Rotary of Ogaki-West. For more information, call Geoff Asher 9571-3833 or John Strong 9836-9165

Visit our website [rotarygleneira.org.au](http://rotarygleneira.org.au)



**11th  
Nov**

### CITY2SEA

SUNDAY 11th NOVEMBER 2012

THE CITY2SEA 14km FUN RUN STARTING AT THE ARTS CENTRE, AROUND ALBERT PARK LAKE AND FINISHING BY THE SEA AT ST KILDA.

Rotary District 9800 has again been asked again to source and manage the 700 volunteers for this great event. Let us know 'asap' that you would like to be a part of this great event.



What are the benefits of participating in City2Sea 2012?

1. Raise funds for your valuable projects ie 20 volunteers = \$600!
2. Involves your Club as a team in a fun event
3. Promotes Rotary to 15,000+ participants and spectators.

Contact Sandi Fulcher, City2Sea Event Coordinator

Mobile: 0416 063 434 or Work: 9686 0688

Email: [sandi\\_fulcher@hotmail.com](mailto:sandi_fulcher@hotmail.com)

<http://www.rotarydistrict9800.org.au/site/1164/We%20Want%20You%20As%20A%20Volunteer%20for%20The%20City2Sea%20Fun%20Run%202012%282%29.pdf>

**11th  
Nov**

### ANNUAL PAINT IN THE PARK

November 11th. Glen Eira Artists Society and Rotary Club of Caulfield

Register by email [glenart2@gmail.com](mailto:glenart2@gmail.com), and include a short Artist's Statement and Resumé

Briefing at 10.00 am at the Rotunda, Caulfield Park



**13-15  
Nov**

### BED RECYCLING

We have been informed that the next lot of 150 beds from St Vincent's Hospital will be available shortly.

Our plan is essentially the same as last year – to load as many directly into containers at the hospital and dispatch directly.

This is a big task but given our experience last year we know it can be done provided we have an appropriate number of people to assist.

If you can assist please advise Bob Glindemann at [bob.glindemann@bigpond.com](mailto:bob.glindemann@bigpond.com) or 0418 102 702 so that we can plan the work force for each day.



**14th  
Nov**

### PAUL HARRIS BREAKFAST

Chief Commissioner Ken D. Lay APM, Victoria Police

"Contemporary Issues in Policing"

Wednesday, 14th November 7.15 for 7.30 till 9.00am

The RACV Club \$60.00 (incl. GST)

FOR FURTHER INFORMATION PLEASE CONTACT Marjorie Gerlinger, PH: 9807 8320 / 0419 302 109 FX: 9888 3692

Email: [marbern@bigpond.net.au](mailto:marbern@bigpond.net.au)

Booking Form [http://www.rotarydistrict9800.com.au/Images/PHF\\_Breakfast\\_booking-flyer.pdf](http://www.rotarydistrict9800.com.au/Images/PHF_Breakfast_booking-flyer.pdf)





## NOVEMBER 2012

### 17-18 Nov GARDEN DESIGN FEST

The Rotary Garden DesignFest will exhibit 26 superbly designed gardens by some of Melbourne's most acclaimed garden designers.



Gardens will be open from 10:00 am till 5:00 pm and tickets can be purchased in advance on the internet.

The landscape designers will be on hand at their respective gardens to chat to the public; this is a great way for you to informally meet these talented professionals, discuss your design needs and obtain all the relevant information you may need to create or improve your garden.

A very affordable price for gardening enthusiasts of \$35 per person to visit all gardens, or just a few, over the weekend including a full colour copy of the GDF 2012 Booklet containing all the garden and designer details; or alternatively pay only \$8 for a single visit entry ticket.

See the many colourful photographs of the display gardens plus a brief background on each of the designer on our website at [www.gardendesignfest.com](http://www.gardendesignfest.com)

For more information contact Mike McFarlane on 0418 317 418.

### 25th Nov GSE WELCOME HOME FUNCTION

Come and hear from the team after their visit to D1080 UK  
SUNDAY 25 NOVEMBER  
12:00PM FOR 12:30PM  
START  
PITRUZZELLO ESTATE,  
25 DEVERALL ROAD  
SUNBURY/GISBORNE

Directions and map:  
<http://www.pitruzzelloestate.com.au/Contact.html>

Cost: \$45 per head inclusive of 2 course lunch, coffee/tea  
Drinks at bar prices  
Cheque to RC Woodend, PO Box 333, Woodend 3442, or Direct debit to BSB: 033674 Account: 790054 with names



RSVP by 16th November To [cbender@bigpond.net.au](mailto:cbender@bigpond.net.au) with names and any dietary requirements

## Do you have a letter for Clarice?

### Contact the Editor

Do you have a letter for Clarice?  
Is something on your mind?

Send your thoughts to her email address at  
[clarice@rotarydistrict9800.org.au](mailto:clarice@rotarydistrict9800.org.au)



## ROTARY DISTRICT 9800 Events Calendar

For a full Notices & Events calendar, visit the following link:  
[http://www.rotarydistrict9800.org.au/notices\\_and\\_events](http://www.rotarydistrict9800.org.au/notices_and_events)

To submit Notices & Events, please send Clarice all the details at:  
[clarice@rotarydistrict9800.org.au](mailto:clarice@rotarydistrict9800.org.au)



# Networker

Rotary District 9800

A publication for  
Rotarians and  
all community  
minded people

## DG Weekly Message

*While DG Dennis and Lynda are on a well-earned break, I caught up with DGE Ross and his lovely wife Annette for a bit of a Q&A chat. Ross is certainly looking forward to his year as District Governor in 2013-2014 and is quite honoured that he will be serving the 69 Clubs in our wonderful District 9800.*

**Clarice:**

How does it feel to be elected District Governor?

**Ross:**

It is certainly humbling to be chosen by your peers to assume any leadership role, but within our great organization Rotary



District Governor Dennis Shore and Lynda

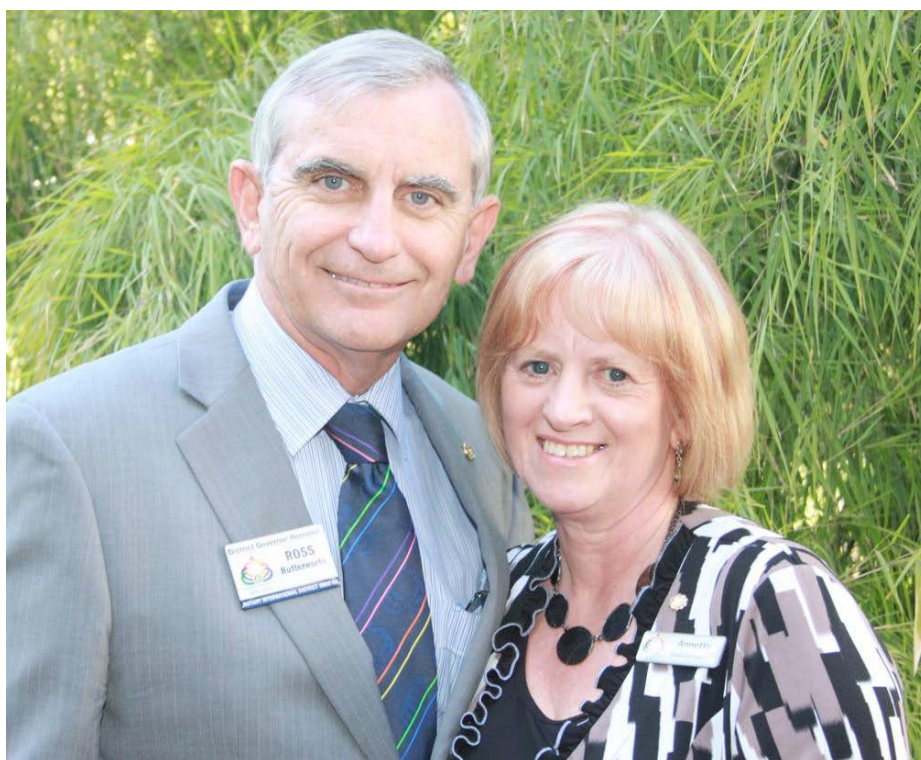
International, few positions present themselves with the opportunity to serve more so than District Governor.

**Clarice:**

Tell us a little bit about where you are from.

**Ross:**

My family moved from Sydney to Melbourne and I found myself enjoying life in the Coburg/Essendon area. I met my beautiful wife Annette whilst living



### In this Issue



- 03 Market a Money-Spinner
- 04 Spirit of Moonee Valley Awards
- 05 Pop-up Stall
- 06 Public Speaking Made Easy
- 07 Thoughts on Membership
- 08 Second Avenue of Service
- 10 Spreading the News about Rotary
- 11 New Members/Letters to the Editor
- 12 Notices and Events
- 16 Attendance/Membership

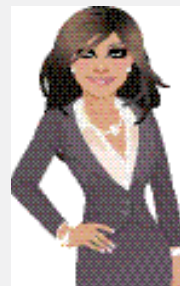
### Contact the Editor



**Clarice Caricare**

Do you have a letter for Clarice? Is something on your mind?

Send Clarice an e-mail at [clarice@rotarydistrict9800.org.au](mailto:clarice@rotarydistrict9800.org.au)



### October is Vocational Service Month







in the area – we married in the early 1970's and moved to Melton shortly afterwards and apart from a short stint in East Gippsland, we have remained Meltonians ever since.

**Clarice:**

Wow, Meltonians...I believe you even had baby Meltonians?

**Ross:**

Yes, we have three boys and a girl - all grew up and were educated in Melton. We now have two grandsons and a granddaughter.

**Clarice:**

What about your careers?

**Ross:**

Annette and I both built careers in the Hospitality Industry and owned several businesses in the industry. We retired in 2007 but were enticed into the Property Development Industry in 2009 by family friends and have been involved in it ever since.

**Clarice:**

OK, now to Rotary...when did you get involved?

**Ross:**

I joined the Rotary Club of Melton Valley in 1994, but felt I really understood what is to be a true Rotarian when I was asked to Chair the Club International Service Committee in 1999. I soon realized the potential of Rotary and have proudly witnessed some wonderful projects achieved by my Club and Rotary as a whole. So proud in fact, that I had to share this experience with my wife! So she too joined Rotary in 2008 and we have shared the amazing journey ever since.

**Clarice:**

That is wonderful – I just love seeing women in Rotary! What are you really passionate about in Rotary?

**Ross:**

Foundation! It's the engine room of Rotary International. It allows us to do all the good work we do and to improve people's lives in so many ways whether it is in Australia or in overseas communities.

**Clarice:**

We would all have to agree with you on that. What other areas are you strong about?

**Ross:**

Coming from a small Club I'm also passionate about helping Clubs achieve their potential regardless of size. As District Governor Dennis states; "Rotary is Amazing" and it is! Regardless of Club size, age or demographic all Clubs contribute to the greater

good, but sometimes we don't let enough people know. It's so important that whenever we start off on our next project that we remember to shout out about it, and let the whole community in on the greatness of Rotary.

**Clarice:**

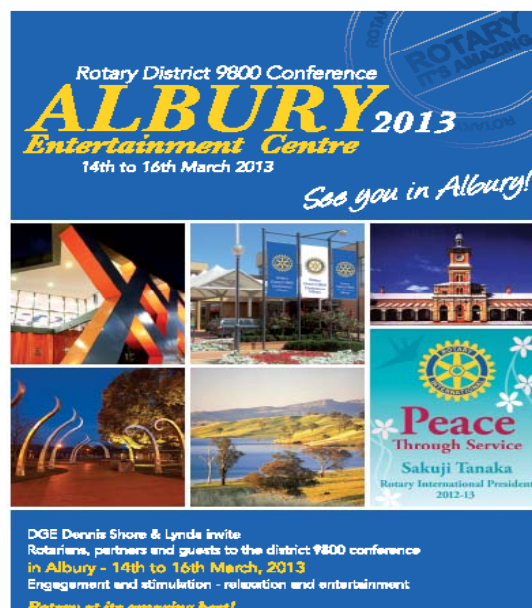
I agree DGE Ross...it would certainly help our membership growth if everyone knew how amazing Rotary is! What do you suggest we do about it?

**Ross:**

You know, I recently heard our membership reduction described as more of a symptom than a problem. I basically agree with that premise, and of course if we had more members we would be able to do more projects more effectively and raise more funds! But we have stagnated with our numbers for some years in the western hemisphere and I suspect we might be writing more cheques today than we perform hands-on projects. If we can get back to having fun meetings and giving our members activities and projects they like doing, they see benefits in doing and they have fun doing, then perhaps we won't have to resort to locking the back door! Members will stay, and they will bring their friends! Why? Because they will want to be at meetings, and they will want to be members of Rotary. We all need to remember the three 'F's: Fun, Friendship and Fundraising. That is what will bring people to Clubs.

**Clarice:**

Well, I certainly like having fun and being hands-on with projects, so that makes sense to me! I guess we can look forward to your year as District Governor as a year of fun, friendship and fundraising!





# Market a Money-Spinner

By Tony Thomas RC Central Melbourne Sunrise

Melbourne South Rotary Club may be small in numbers – a few more than 20 – but it's found a great little fund-raiser, a farmers' market raising \$4500. "A year?" I asked. "Per month," replied Russel Barnes, director international, who is one of the key inspirers and implementers.

The market is in Albert Park near Fitzroy St, St Kilda, on the fourth Sunday of the month. It is now in its fourth month, with vendors selling largely-organic food and meats, and flowers.

The club charges a voluntary entry of \$2 to shoppers, or \$5 per family. It also runs a sausage sizzle there, but the bulk of the raisings are from admissions, as thousands of people troop through from 8am to 1pm.

There are two shifts, from 8-11 and 11-1pm, involving ten people each. The club brings in helpers from other clubs and Rotaracts, including St Kilda and Port Melbourne RCs, and Melbourne and Monash Rotaracts, and splits the proceeds. The event needs two members with money buckets per entrance, others to man the sizzle, and some to man the club's information booth advertising Rotary. Russel starts at 5.30-6am to set up. The sizzle starts with bacon and eggs for breakfast and sausages by lunch-time. "People swarm in with their kids and even dogs," he says.

The best part is that the logistics of running the market is all done through a third-party organization called Regional Farmers Markets (RFM). Russel negotiated with Parks Victoria for six months to get the market permit for his club: "They were very iffy about use of Albert Park but our Rotary is non-commercial and has a high reputation. RFM could never have got a permit, being commercial."



The club's favorite charities include water supplies to villages in Cambodia, a Braille machine for a blind school in Nepal, micro-lending for uniforms and laptops for parents of Albert Park College (many are single mothers, and they pay the normal \$800 loan back via Centrepay).

Russel thinks there is still plenty of scope for new farmers' markets, including in the Melbourne CBD: "Hampton and Sandringham RCs helped me with their nous running the Bayside Farmers Market so I'm happy to help any other club get a market going." Contact [russel@lexic.com.au](mailto:russel@lexic.com.au)





## Spirit of Moonee Valley Awards

The Spirit of Moonee Valley Awards are an opportunity to recognise and celebrate the achievements of people whose contribution to Moonee Valley deserves special recognition. The awards were recently presented at the Clocktower Centre in Moonee Ponds. by Cr Jim Cusack, Mayor, Moonee Valley City Council, who said:

"The 2012 Citizen of the Year is **Peter Cribb** of the Rotary Club of Flemington. Peter is an active member of the club and has worked tirelessly for the residents of the Debneys Park housing estate. He has been the driving force behind the club's support for the Horn of Africa migrants and has galvanised support from the wider community for many projects.

"He was the initiator and drive behind the Rotary Club's establishment of an Opportunity Shop in Racecourse Road and has developed strong relationships with elders in the CALD Communities at Debneys Park and with associated community organisations including the Bendigo Bank, the Australian Police Force, Victoria Police and Sports Without Borders.

"Other projects in which Peter has had a strong role are with the Eritrean Australian Humanitarian Association, the Australian Somali Football Federation, Flemington Eagles and North Lions Soccer Clubs, and the Flemington Community Golden Age Chinese Association.

"This year, Peter has seen the realisation of a dream with the fruition of the ROADStart Project providing adult learners with the necessary supervised hours of practice to obtain a driving licence.

"Congratulations Peter Cribb, Moonee Valley City Council's Citizen of the Year!"

*Photo: Mayor Jim Cusack,  
Yvonne Moon, RC Williamstown,  
Peter Cribb, RC Flemington,  
Peter Dunn, RC Strathmore,  
Debbie Williams, RC Moonee Valley.*

The Spirit of Moonee Valley Awards showcased three other Rotarians who received top awards:

**Peter Dunn** founded Moneyplan Australia, which has assisted thousands of people with their financial affairs, especially for retirement planning and aged care advice. He is a member of the Future2Foundation Awards Committee which assists young people with community style grants, and is also a Director of the Moonee Valley Foundation which also provides youth grants. Peter is an active member of Rotary Strathmore.

**Yvonne Moon** has helped raise over \$700,000 towards RoCan Ovarian Cancer Research and was awarded an Order of Australia Medal (OAM) for her outstanding work in the community. She is Centre Management for Union Road Traders Association and the Centreway Traders Association, as well as a Board Member of Rotary. She is a member of the Steering Committee of the Western Region Indigenous Art Show and has also been involved in the Kokoda Project which enables disadvantaged youth of Flemington to walk the Kokoda Trek.

**Debbie Williams** is founding President of the Moonee Valley Toy Library and responsible for securing large grants that are integral to its ongoing operation. She was awarded a Federal Government Board Diversity Scholarship in 2011 and is a member of Moonee Valley Rotary and the Southern Health Board of Directors.





# 'POP-UP' STALL

*By Annie Wysham, RC Richmond*

## It popped-up thru Motto's generosity!

Faye and John Browne of Motto – ladies fashion manufacturers in Richmond - are wonderful supporters and friends of the Rotary Club of Richmond. Motto's latest big-hearted act of generosity has been to donate their entire range of sample garments to the Richmond Club so it can profit from their sale. To find an outlet to sell the samples lead to the creation of the 'Pop-Up' stall concept by PP Jo Cowling, her Fundraising Committee, and the Friends of Richmond Rotary (FoRR). Maureen Pang, wife of PP Trevor Pang, is the Chair of FoRR. All monies raised support RC Richmond's community projects.

To be able to transport the garments Faye and John also loaned their unmarked company bus. It's fitted with racks so the clothes can hang to maintain their freshness. It also allows room for all the equipment needed to set up the stall. Valued Friends of Richmond Rotary, Glenys and John Liddell, are the able volunteers in charge of the bus. The 'Pop-Up' stall itself is operated on a roster by a combined team of Richmond Rotarians and FoRRs'.

The next 'Pop-Up' stall will be featured as part of the Shirt and Skirt Market to be held in the grounds of the Abbotsford Convent, 1 St Helier's Street, Sunday 18th November, 9.00am-4.00pm ((Mel map: 44 G5) Cash sales, credit card and eftpos facilities available.

And the best news to pop-up for the customers? All these Australian-made, women's, designer-label, Motto fashion samples (skirts, tops, jackets, dresses and pants), in sizes 10-16, will sell for only \$20 apiece...and there will 300+ to choose from!

See some of them at [www.motto.com.au](http://www.motto.com.au)





# Public Speaking Made Easy

On Sunday 21st October, another successful Public Speaking Program was held at the Keilor East RSL for some of the 2013-14 President-Elects. The program sponsored by the Rotary Club of Brimbank Central was conducted by District Secretary-Elect David Bennett.

The day featured each of the nine participants making seven short speeches on a variety of subjects (social and general).

They were all shown a very simple yet effective way to generate subject ideas and then to collate and sort them into a speech plan culminating in the delivery of the speech using only prompt cards.



The “hands on” methodology where participants “learn by doing” proved a hit and the feedback from all continues to show how valuable and needed programs like this are for those who would like to become more confident and proficient at Public Speaking.

We even had “Clarice” in attendance and her speeches were interesting and informative albeit a little over time at one stage. Nevertheless, we had a great day with good learning, fun and fellowship in a non-threatening relaxed environment.

*Top: PE Jan Twite expounding on “Something I am Passionate About”*

*Centre: Discussions continued over lunch*

*Lower: The class, with tutor David Bennett (rear right). Watch out for them on the Speaker’s Circuit!*





# Some Thoughts on Membership

*By David Bennett, RC Brimbank Central*

There are numerous discussions taking place all over the world in Rotary about membership. Why can't we find more people to join? Why do most new members leave Rotary within the first two years of membership? How do we get younger members? These are just a few among the many, many questions that are being asked day in and day out.

What is it that people want from Rotary? What specific reason have they joined, and why can't we tap into that and give them a fulfilling and rewarding membership experience? One thing is clear. We need to engage people in our clubs, and not just have them come along to meetings and not be involved. Have we become too eager to recruit, sending the wrong message and obtaining members who are not suited to Rotary. Perhaps we need to think less about "younger age" and that it may be less important than capability/reliability/willingness. It is vital to engage the partner/spouse so that they empathise with what Rotary does and stands for.

Abraham Maslow (1954) presented a hierarchy of needs model which can be divided into basic (or deficiency) needs (e.g. physiological, safety, love, and esteem) and growth needs (cognitive, aesthetics and self-actualization).

One must satisfy lower level basic needs before progressing on to meet higher level growth needs. Once these needs have been reasonably satisfied, one may be able to reach the highest level called self-actualisation.

Every person is capable and has the desire to move up the hierarchy toward a level of self-actualisation. Unfortunately, progress is often disrupted by failure to meet lower level needs. Life experiences including divorce and loss of job may cause an individual to fluctuate between levels of the hierarchy.



Maslow noted only one in a hundred people become fully self-actualised because our society rewards motivation primarily based on esteem, love and other social needs. It is important to note that Maslow's (1954) theory has been elaborated upon by other researchers.

In 2009 at the Zone 34 Membership seminar, they took Maslow's model and addressed it in terms of a Rotary Club and indeed it's membership.

The model shows clearly the stages of club development that take place, and it would be an interesting exercise to look at where you feel your Club might be.



# THE SECOND AVENUE OF SERVICE

By Mike McFarlane, District Vocational Chairman

As October is Vocational Service month, the first three articles written in Networker on Vocational Service this month highlighted a more contemporary approach as to how Members, Clubs, Clusters and the District can innovate and reposition this Second Avenue of Service in a more meaningful way in 2012-13.

Clubs are asked to focus on Vocational Service, particularly Club's achievements during Vocational Service Month and promote activities, speakers or forums involving the wider community to emphasise the origins, the purpose and high ethical standards of Rotary.



Your Vocational Service Committee consists of Club representatives with a passionate interest in a particular avenue of Vocational Service incorporating the experience of previous committee members with the enthusiasm injected by newer members. They are available on request, happily assisting Clubs in their quest for new ideas or facilitating likeminded Clubs seeking vocational networking opportunities.

Rotarians willingly exercising their vocations for the common good is as relevant today as it was some one hundred years ago when Paul Harris profoundly stated: ***"Of all the hundred and one ways in which men can make themselves useful to society, undoubtedly the most available and often the most effective are within the spheres of their own occupations."***

There are perhaps still 101 ways for Rotarians to use their vocations directly or indirectly in service, so let's drill down on some.

One of the primary goals of Vocational Service is to promote Rotary's high ethical standards to enhance positive leadership values in business and the community. The two tools Rotarians have to assess such standards are "The Four Way Test" and the "Declaration of Rotarians in Business and Professions". How have you incorporated these documents in your Club this month?

Has your Club planned an event or activity this year to celebrate your Members vocations? Or alternatively incorporated a Vocational visits to a member's workplace or a nearby community workplace. Perhaps organised a local primary school essay competition on Rotary's Ethics; or proposed a Great Debate at either Club or Cluster level on Contemporary Ethics?

**The Police Leadership Mentoring Program** is a magnificent example of a very successful Vocational program which was initiated in 2007 by Central Melbourne Sunrise to foster a tripartite partnership amongst; leaders in the Victoria Police, Rotary and Corporations in Victoria. It started as just an idea, a concept needing to be fleshed out by a steering team including Rotarians. Since then many Police leaders from Senior Sergeant to Assistant Commissioner have been partnered with senior business executives and experienced Rotarian Mentors from Clubs in our District with outstanding results.

Another successful vocational venture, **Computers 4 Kids and Community**, is a program that liaises with businesses and individuals to donate late model superseded PC / IT equipment and refurbish as necessary; thereafter providing it free-of-charge to disadvantaged students and needy groups in the community who would otherwise be without such equipment. C4KC is literally making a **World of Difference** to Asutran kids and kids in Cambodia – see website: <http://wod.org.au/>

**The Shine On Awards** are another outstanding Australia-Wide Rotary Award program that recognises exceptional service by persons with disabilities who aspire to great heights despite their disabilities, reaching their goals to serve others in a vocational or community sense. Clubs may nominate persons who meet the criteria, with all nominees receiving a recognition - a Certificate of Commendation. This year our District assisted by Yarraville Club has the honour of hosting this multi-district program.

**Students in Free Enterprise (SIFE)** provides community mentoring to university SIFE teams in relation to the practical and professional help in the identification, development and sustainability of projects and programs for community benefit. It also facilitates the development ethical business practice using both vocational skills and business management techniques. This program additionally coordinates Rotary's involvement in judging panels for the National SIFE Championships to select the representative Australian University SIFE team to contest the annual SIFE World Cup.



**Literacy** is taken for granted by many; however, everyone has the right to learn to read, write and enjoy the power, pleasures and independence of being literate. For some the journey will be easy, for others it will take much hard work and unfortunately for approximately 18% of today's world population it will never happen. The reasons are complex and varied as they are related to poverty, homelessness, unemployment, culture, politics, poor health, lack of resources and opportunities. This situation cannot be accepted, so whatever we do Rotarians will make a difference and contribute to a predicted reduction of this shocking statistic by 2015.

**The Sumba Eye Program** is a "Vocations in Service" program harnessing the vocational talent of both Ophthalmologists and Optometrists to provide life changing "vision" to the blind on the island of Sumba in Indonesia. It was initiated by two Rotarians from the Rotary Clubs of Glenferrie and Kew offering their professional skills and supported financially by their respective Clubs and others. If ever there was evidence of Rotarian vocations making a real and visible difference this is it!! See the You Tube video at: [http://www.youtube.com/watch?v=cmNxgoJp\\_H8](http://www.youtube.com/watch?v=cmNxgoJp_H8) This week Brimbank Central held a very impressive Vocational Service Awards Dinner and Presentation night honouring six exceptional employees from local businesses prepared to go above and beyond their roles for the good of their respective companies and community.

Lastly but certainly not least, consider working with your local **Landscape Designers** or TAFE College Students to prepare and display selected local gardens in spring or autumn; thereby supporting your local horticulture vocations and simultaneously raising funds for your supported charities! By way of an example see **GARDEN DesignFest 2012** on this November at: [www.gardendesignfest.com](http://www.gardendesignfest.com)

The ideas here are free but it takes time and energy to implement, however in actioning you will have a stronger Club. Maybe your Club only needs a guest speaker for a meeting, or seeks a briefing for your Vocational Service team, or help to implement a new program; whichever it is, please make contact with a committee member or just give me a call and let us together lift Vocational Service back to the priority it deserves to be as the Second Avenue of Service in Rotary. Peace Through Service.

## OTHER SUGGESTED PROGRAMS:

Adult Literacy Program, Adventures in Citizenship, After School Computer Skills, Career Insight Program, Early School Leavers Re-education Support Program, Emergencies Service Appreciation Dinner, Ethical Conundrum Discussion, Ethics & Leadership in schools / universities, Mentoring Involvement, Mock Interviews, Open Garden Weekend with TAFE students, Primary Spelling Bee, Professional Interview Workshop Year 11, Reading Aloud Program, School Literacy Programs, The 4-Way Test School Debate, The 4-Way Test Primary School Essay, The 4-Way Test School Rulers, Vocational Excellence Awards, Vocational Visits, Vocational Service Database, Work Experience Programs, Young Driver Education Program.



**Computer 4 Kids Cambodia (World Of Difference)**





## SPREADING THE WORD ABOUT ROTARY

Rotary advertisements have commenced. The advertisement attached will appear in the November issue of "Royalauto".

The RACV are also keen to get good news stories published on the work done in each District, and a series of advertisements with high profile Rotarians promoting Rotary is planned.



3AW Fairfax Radio Group have agreed to do a series of new radio advertisements to promote Rotary through extensive free community service announcements, not just on 3AW but through Fairfax Radio nationally.

The call centre team at 1300 4 ROTARY have been made aware of the advertisement and will forward callers with enquiries to the Club nearest them.

With this CLUB  
you'll be rewarded  
everyday.

Call 1300 4 ROTARY  
[www.rotaryaustralia.org.au](http://www.rotaryaustralia.org.au)



Rotary. Humanity in motion.





## Welcome New Members

Peter W. Lamping, District 9800 Attendance Officer informs us of new members for these clubs:

Williamstown, Paul White

Hoppers Crossing, Louise Bugeja

Kew, Kathleen Grant

Gisborne, Richard Barker (Ex RC of Strathmore D9790), Marilyn Evans

Brighton North, Harry Marget

Brimbank Central, Khanh Nguyen

Bacchus Marsh, Dudley Raine

Prahran, Pamela Swansson

Bendigo Sandhurst, Marcus Dingle

Laverton Point Cook, Deborah Jasper



## Letters to the Editor



*Morning Clarice et al,*

*We had 25 in "Team Rotary" from the Rotary Club of Melbourne out on the road raising money for the Smith Family yesterday. in addition because we had the same number of Rotarians out there as volunteer marshals we will be given the best part of \$7k for our Club for our favourite charity from Bicycle Victoria.*

*If you go to the clip below you will notice 4 Melbourne Rotarians in the photo behind the newsreader & then those same Rotarians featured in the news broadcast !!!*

*From left to right the Rotarians are :Bruce Davis, Douglas Marshall, Phil Endersbee, Peter Davis.*

<http://www.abc.net.au/news/2012-10-21/thousands-join-the-20th-annual-around-the-bay-bike/4325636?section=vic>

*Cheers,*

*Phil Endersbee*

*PS we should have RDU selling Rotary cycle tops so we all can be recognised and promote Rotary !!!! And not boring tops either - we could do something quite striking & fashionable - even the design could be a fund raising competition !!!!!*







# Notices and Events

## NOTICES

For a full Notices & Events calendar, visit the following link:

[http://www.rotarydistrict9800.org.au/notices\\_and\\_events](http://www.rotarydistrict9800.org.au/notices_and_events)

### ROTARY'S GOT TALENT

An exciting new 'Rotary's Got Talent' competition, to be part of the Dinner Dance, will give every Club a chance to show off their talents at the Albury Conference in March. There is a great first prize donated by Rivera Properties Metung: A Metung Getaway Package including: two nights for 4 people in a holiday unit at McMillans of Metung; Guided tour and Golf Package at Kings Cove Metung with 4 rounds of golf, electric carts, club hire and refreshments; and Director boat charter for a cruise on the Gippsland Lakes – valued at \$1,000. A great way to explore Gippsland's Riviera.

The Entry Form and competition rules are at [http://www.rotarydistrict9800.com.au/images/rotary\\_talent.pdf](http://www.rotarydistrict9800.com.au/images/rotary_talent.pdf)

Entries need to be submitted before 15 October 2012.

Auditions will be held in November. The 'Rotary's Got Talent' Committee can answer any further questions.

Ian Stoney: Mobile: 0400 209 802 [ifxs@aapt.net.au](mailto:ifxs@aapt.net.au)

Noel McInnes, Mobile: 0418 310 007 [noelmci@openwindows.com.au](mailto:noelmci@openwindows.com.au)



### ANZAC CENTENNIAL TOUR GALLIPOLI 2015

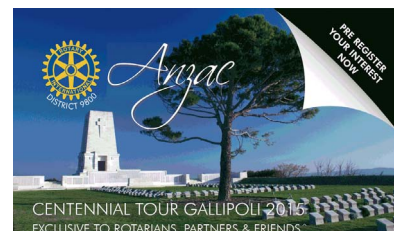
A project of the Rotary Club of Balwyn in conjunction with Rotary District 9800 Australia and the Rotary Club of Göksu, Istanbul and Rotary District 2420 Turkey Rotarians and Partners from Australia and New Zealand are invited to register your interest in participating in this special event. Since 2005, the Rotary Club of Balwyn and the Rotary Club of Göksu have co-hosted ANZAC Peace Tours.

The 2015 Centennial Tour will comprise a 14 night package of 7 nights in Istanbul discovering modern and ancient Turkey followed by 7 night luxury cruise participating in ANZAC celebrations and visiting the Greek Islands.

To avoid disappointment you can secure your place today by paying a fully refundable deposit of only \$250 per person.

Please email us at: [Groupsadmin@aptouring.com.au](mailto:Groupsadmin@aptouring.com.au) or mail to: P.O. Box 118, Hampton, Vic. 3188.

For more information Call APT Groups on 1800 655 440 [www.balwynrotary.org.au](http://www.balwynrotary.org.au)



### LAPTOP COMPUTERS WANTED

World of Difference, Rotary Club of Echuca and Campaspe College of Adult Education are working together....In October 2012 10 students will have the opportunity to immerse themselves in the culture, history and daily life of Cambodia. Laptop computers are high on the list for donations to take for the projects that they will volunteer at.

If you have any laptops that are now no longer used please let us share them with young students and teachers who would treasure them.

Contact Bronwyn Stephens to arrange drop off or collection: 0410 32 4537. [www.wod.org](http://www.wod.org).



## EVENTS

### OCTOBER 2012

27th  
Oct

#### WHITE ELEPHANT SALE - Rotary Club of Melbourne

Saturday 27th October at the Abbotsford Convent in Collingwood from 8am. Quality and Designer second hand clothing including some vintage pieces, handbags and shoes, Bric a Brac, china, pottery, crystal and glassware, antique Japanese and Chinese bowls, jewellery, general household goods. The sale will be in the Linen Room at the Convent. There is a gold coin admission to the Slow Food Market on the day.

Enquiries to Maryla Juchnowski 0422 068 229





## EVENTS OCTOBER 2012

**28th  
Oct**

### **Coffs City Rotary Golf Challenge** - 28 October

The best performing Rotary team will win \$1,000 for their clubs charity account.

All players and teams will be eligible for a host of other prizes including a hole in one prize of \$10,000 for their nominate charity.

Contact Peter Lindsay

PO Box 2079, COFFS HARBOUR NSW 245

Mob 0418 280 604 [plindsay@achieveoutcomes.com.au](mailto:plindsay@achieveoutcomes.com.au)



**28th  
Oct**

### **CAMCARE CONCERT** - Rotary Club of Hawthorn

The Grand Camcare Concert will be held on 28th October this year at Genazano, 301 Cottham Rd, Kew..

It promises to be an outstanding concert once again.

Tony Charlton has arranged a talented and diverse group of musicians and entertainers for the event who include:

*The Royal Melbourne Philharmonic Choir*

*Allan Kogasovski, piano: Sally Cooper, Violin*

*Blackburn High School Band*

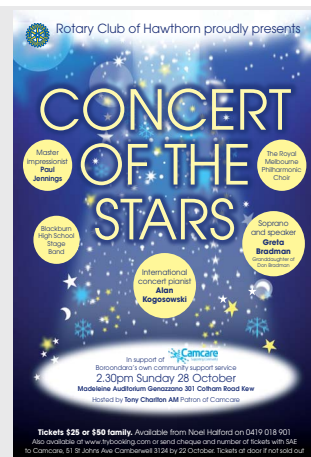
*Paul Jennings Comedian and impersonator*

*Rebecca Chambers, Classical pianist and former Young Australian of the Year*

At only \$25.00 or \$50 family this represents incredible value.

Proceeds will be shared between Camcare and club revenue.

Please call Noel Halford on 9889 1519 or 04118 901 to book.



## NOVEMBER 2012

**8th  
Nov**

### **OAKS DAY LUNCHEON RC Essendon North**

Thursday 8th November From 11am – 4pm

Fredricks Restaurant, 980 Mt Alexander Rd, Essendon

• Free glass of champagne on arrival • 2 course meal \$45 per head

• Drinks at bar prices • Devonshire afternoon tea

Awards for: Lady of the Day – Best HatSweeps, Lucky Tab Tickets, Lucky Door Prize

Bookings are essential: Contact: Barry Coleman 0427 852 062,

Coral Thompson 9376 8625, Fredricks: 9374 1255 or via Email

[enquiries@fredricksrestaurant.com.au](mailto:enquiries@fredricksrestaurant.com.au)



**10th  
Nov**

### **Rotary Club of Glen Eira 25th Anniversary**

Saturday 10th November 2012

Kooyong Tennis Centre, Glenferrie Road, Kooyong

\$85 per person Pre-Dinner Drinks at 6pm for 6.30pm 3 course buffet

Lots of fun, music and entertainment, together with old memories, and areunion with past members, and members from our friendship club in Japan, the Rotary of Ogaki-West. For more information, call Geoff Asher 9571-3833 or John Strong 9836-9165

Visit our website [rotarygleneira.org.au](http://rotarygleneira.org.au)



**11th  
Nov**

### **ANNUAL PAINT IN THE PARK**

November 11th. Glen Eira Artists Society and Rotary Club of Caulfield

Register by email [glenart2@gmail.com](mailto:glenart2@gmail.com), and include a short Artist's Statement and Resumé

Briefing at 10.00 am at the Rotunda, Caulfield Park







## NOVEMBER 2012

**11th  
Nov**

### **CITY2SEA**

SUNDAY 11th NOVEMBER 2012

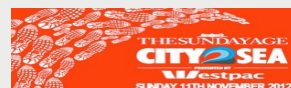
THE CITY2SEA 14km FUN RUN STARTING AT THE ARTS CENTRE, AROUND ALBERT PARK LAKE AND FINISHING BY THE SEA AT ST KILDA.

Rotary District 9800 has again been asked again to source and manage the 700 volunteers for this great event. Let us know 'asap' that you would like to be a part of this great event.

Contact Sandi Fulcher, City2Sea Event Coordinator

Mobile: 0416 063 434 or Work: 9686 0688 Email: [sandi\\_fulcher@hotmail.com](mailto:sandi_fulcher@hotmail.com)

<http://www.rotarydistrict9800.org.au/site/1164/We%20Want%20You%20As%20A%20Volunteer%20for%20The%20City2Sea%20Fun%20Run%202012%282%29.pdf>



**12th  
Nov**

### **SHE'S A ROTARIAN**

Monday 12 November 600-700pm Travel Inn Hotel Cnr. Drummond & Grattan St Carlton

Event Cost: Nil

Getting together with other women who are Rotarians.

This informal network of interesting & impressive people who care about making a better world.

Our aim is to introduce more women into Rotary through casual gatherings where we showcase Rotary's contribution to the community.

Bring along another woman . . . experience women networking!

Contact Details: [Kerry @travelinn.net.au](mailto:Kerry@travelinn.net.au)



**13-15  
Nov**

### **BED RECYCLING**

We have been informed that the next lot of 150 beds from St Vincent's Hospital will be available shortly.

Our plan is essentially the same as last year – to load as many directly into containers at the hospital and dispatch directly.

This is a big task but given our experience last year we know it can be done provided we have an appropriate number of people to assist.

If you can assist please advise Bob Glindemann at [bob.glindemann@bigpond.com](mailto:bob.glindemann@bigpond.com) or 0418 102 702 so that we can plan the work force for each day.



**14th  
Nov**

### **PAUL HARRIS BREAKFAST**

Chief Commissioner Ken D. Lay APM, Victoria Police  
"Contemporary Issues in Policing"

Wednesday, 14th November 7.15 for 7.30 till 9.00am

The RACV Club \$60.00 (incl. GST)

FOR FURTHER INFORMATION PLEASE CONTACT Marjorie Gerlinger, PH: 9807

8320 / 0419 302 109 FX: 9888 3692

Email: [marbern@bigpond.net.au](mailto:marbern@bigpond.net.au)

Booking Form [http://www.rotarydistrict9800.com.au/Images/PHF\\_Breakfast\\_booking-flyer.pdf](http://www.rotarydistrict9800.com.au/Images/PHF_Breakfast_booking-flyer.pdf)



**18th  
Nov**

### **LADIES FASHION SAMPLES FOR SALE**

Rotary Club of Richmond's 'Pop-Up' Stall – featuring 300+ Australian-made Motto ladies fashion samples... ALL GARMENTS ONLY \$20 PER PIECE!

Grab a snazzy bargain to wear at the Christmas Festivities and the RD9800 Conference!

SUNDAY 18TH NOVEMBER, 2012, 9.00AM – 4.00PM

\*In the grounds of the Abbotsford Convent - 'Shirt and Skirt Market'

1 St Heliers Street, Abbotsford (Mel map: 44 G5)

Cash/Credit card facilities, eftpos (no cash out)

\*MAKE A DAY OF IT! The Abbotsford Convent has a number of eateries within its grounds - which makes it an ideal place to catch up with friends and family for breakfast, lunch or light refreshments

Enquiries: [secretary@richmondrotary.org.au](mailto:secretary@richmondrotary.org.au)





## NOVEMBER 2012

### 17-18 Nov GARDEN DESIGN FEST

The Rotary Garden DesignFest will exhibit 26 superbly designed gardens by some of Melbourne's most acclaimed garden designers.



Gardens will be open from 10:00 am till 5:00 pm and tickets can be purchased in advance on the internet.

The landscape designers will be on hand at their respective gardens to chat to the public; this is a great way for you to informally meet these talented professionals, discuss your design needs and obtain all the relevant information you may need to create or improve your garden.

A very affordable price for gardening enthusiasts of \$35 per person to visit all gardens, or just a few, over the weekend including a full colour copy of the GDF 2012 Booklet containing all the garden and designer details; or alternatively pay only \$8 for a single visit entry ticket.

See the many colourful photographs of the display gardens plus a brief background on each of the designer on our website at [www.gardendesignfest.com](http://www.gardendesignfest.com)

For more information contact Mike McFarlane on 0418 317 418.

### 25th Nov GSE WELCOME HOME FUNCTION

Come and hear from the team after their visit to D1080 UK  
SUNDAY 25 NOVEMBER  
12:00PM FOR 12:30PM  
START  
PITRUZZELLO ESTATE,  
25 DEVERALL ROAD  
SUNBURY/GISBORNE

Directions and map:  
<http://www.pitruzzelloestate.com.au/Contact.html>

Cost: \$45 per head inclusive of 2 course lunch, coffee/tea  
Drinks at bar prices  
Cheque to RC Woodend, PO Box 333, Woodend 3442, or Direct debit to BSB: 033674 Account: 790054 with names



RSVP by 16th November To [cbender@bigpond.net.au](mailto:cbender@bigpond.net.au) with names and any dietary requirements

## Do you have a letter for Clarice?

### Contact the Editor

Do you have a letter for Clarice?  
Is something on your mind?

Send your thoughts to her email address at  
[clarice@rotarydistrict9800.org.au](mailto:clarice@rotarydistrict9800.org.au)



## ROTARY DISTRICT 9800 Events Calendar

For a full Notices & Events calendar, visit the following link:  
[http://www.rotarydistrict9800.org.au/notices\\_and\\_events](http://www.rotarydistrict9800.org.au/notices_and_events)

To submit Notices & Events, please send Clarice all the details at:  
[clarice@rotarydistrict9800.org.au](mailto:clarice@rotarydistrict9800.org.au)





## September Club Membership and Attendance Figures

| District 9800            |              | Attendance   |        | Membership |              |     |                       |          |
|--------------------------|--------------|--------------|--------|------------|--------------|-----|-----------------------|----------|
| 2012/2013                |              | September-12 |        | At June 30 | September-12 |     |                       |          |
| Club                     | Cluster      |              |        |            |              |     |                       |          |
|                          |              | No of        | Months |            | Start        | End | Net gain / loss 12/13 | % Change |
|                          |              | Mins         | %      |            |              |     |                       |          |
| Melbourne Park           | Heritage     | 4            | 60%    | 18         | 22           | 23  | 5                     | 27.8%    |
| North Melbourne          | Heritage     | 4            | 55%    | 34         | 28           | 26  | 4                     | 18.7%    |
| Milton Valley            | Westside     | 4            | 95%    | 16         | 18           | 19  | 2                     | 12.5%    |
| Deaklands                | Balman       |              |        | 9          |              | 10  | 1                     | 11.5%    |
| St Kilda                 | Stonnington  | 4            | 45%    | 9          | 10           | 10  | 1                     | 11.1%    |
| Benago Strathdale        | Goldfields   | 4            | 75%    | 26         | 28           | 26  | 2                     | 7.7%     |
| Brimbank Central         | Gateway      | 4            | 82%    | 27         | 29           | 29  | 2                     | 7.4%     |
| Sunshine                 | Westside     |              |        | 18         |              | 19  | 1                     | 5.6%     |
| Kelton East              | Gateway      | 4            | 75%    | 40         | 41           | 42  | 2                     | 5.0%     |
| Osborne                  | Caldar       | 4            | 74%    | 24         | 24           | 25  | 1                     | 4.2%     |
| Brignton North           | Beachside    | 4            | 68%    | 50         | 51           | 52  | 2                     | 4.0%     |
| Wyndham                  | Port Phillip | 4            | 86%    | 26         | 27           | 27  | 1                     | 3.8%     |
| Albert Park              | Balman       | 4            | 40%    | 63         | 65           | 65  | 2                     | 3.3%     |
| Levenson Point Cook      | Port Phillip | 4            | 85%    | 34         | 34           | 35  | 1                     | 2.9%     |
| Beachus Marsh            | Westside     | 4            | 48%    | 35         | 35           | 36  | 1                     | 2.9%     |
| Kew                      | Yarra        | 4            | 80%    | 35         | 35           | 36  | 1                     | 2.9%     |
| Castlemaine              | Caldar       | 3            | 66%    | 36         | 37           | 37  | 1                     | 2.8%     |
| Chadstone / East Malvern | Stonnington  | 4            | 72%    | 44         | 44           | 45  | 1                     | 2.3%     |
| Hawthorn                 | Yarra        | 4            | 85%    | 57         | 58           | 58  | 1                     | 1.8%     |
| Camberwell               | Eastside     | 4            | 75%    | 77         | 78           | 78  | 1                     | 1.3%     |
| Altona                   | Port Phillip | 4            | 57%    | 34         | 24           | 24  | 0                     | 0.0%     |
| Benago Sandhurst         | Goldfields   | 4            | 77%    | 51         | 51           | 51  | 0                     | 0.0%     |
| Boroondara               | Eastside     | 3            | 47%    | 15         | 15           | 15  | 0                     | 0.0%     |
| Brunswick                | Heritage     | 4            | 43%    | 38         | 28           | 28  | 0                     | 0.0%     |
| Coatfield                | Beachside    | 4            | 85%    | 10         | 10           | 10  | 0                     | 0.0%     |
| Collingwood              | Heritage     |              |        | 20         |              | 20  | 0                     | 0.0%     |
| Essendon North           | Gateway      | 4            | 56%    | 20         | 26           | 26  | 0                     | 0.0%     |
| Glen Eira                | Beachside    | 4            | 65%    | 18         | 18           | 18  | 0                     | 0.0%     |
| Glenfale                 | Yarra        | 4            | 68%    | 42         | 42           | 42  | 0                     | 0.0%     |
| Kangaroo Flat            | Goldfields   | 4            | 83%    | 25         | 24           | 25  | 0                     | 0.0%     |
| Kew-on-Yarra             | Yarra        | 4            | 87%    | 17         | 17           | 17  | 0                     | 0.0%     |
| Melton                   | Westside     | 4            | 75%    | 27         | 27           | 27  | 0                     | 0.0%     |
| Moonee Valley            | Gateway      |              |        | 14         |              | 14  | 0                     | 0.0%     |
| Point Goldbrand          | Hobsons Bay  | 4            | 63%    | 37         | 37           | 37  | 0                     | 0.0%     |
| Port Melbourne           | Balman       | 3            | 60%    | 10         | 10           | 10  | 0                     | 0.0%     |



|                                 |              |   |       |      |     |      |     |        |
|---------------------------------|--------------|---|-------|------|-----|------|-----|--------|
| Richmond                        | Heritage     | 4 | 77%   | 37   | 37  | 37   | 0   | 0.0%   |
| Fosberder                       | Goldfields   | 4 | 75%   | 8    | 8   | 8    | 0   | 0.0%   |
| Southbank                       | Balmain      | 4 | 55%   | 23   | 23  | 23   | 0   | 0.0%   |
| Toorak                          | Stonnington  | 4 | 73%   | 30   | 30  | 30   | 0   | 0.0%   |
| Brigton                         | Beechside    | 4 | 57%   | 108  | 107 | 107  | -1  | -0.5%  |
| Footscray                       | Hobsons Bay  | 4 | 55%   | 55   | 54  | 54   | -1  | -1.8%  |
| Carlton                         | Heritage     | 4 | 53%   | 41   | 40  | 40   | -1  | -2.4%  |
| Balwyn                          | Eastside     | 4 | 58%   | 77   | 75  | 75   | -2  | -2.6%  |
| Essendon                        | Gateway      | 4 | 52%   | 68   | 69  | 68   | -2  | -2.9%  |
| Melbourne                       | Balmain      | 4 | 62%   | 234  | 232 | 227  | -7  | -3.0%  |
| Doylesford                      | Colder       | 3 | 80%   | 31   | 30  | 30   | -1  | -3.2%  |
| Melbourne South                 | Balmain      | 4 | 50%   | 29   | 28  | 28   | -1  | -3.4%  |
| North Balwyn                    | Eastside     | 4 | 50%   | 77   | 75  | 74   | -3  | -3.9%  |
| Flemington                      | Hobsons Bay  | 4 | 75%   | 25   | 24  | 24   | -1  | -4.0%  |
| West Footscray                  | Hobsons Bay  | 4 | 65%   | 35   | 34  | 34   | -1  | -4.0%  |
| Woodend                         | Colder       | 4 | 78%   | 28   | 24  | 24   | -1  | -4.0%  |
| Hoppers Crossing                | Port Phillip | 4 | 72%   | 23   | 21  | 22   | -1  | -4.3%  |
| Prahran                         | Stonnington  | 4 | 77%   | 33   | 31  | 32   | -1  | -4.3%  |
| Brigton Beach                   | Beechside    | 4 | 64%   | 21   | 20  | 20   | -1  | -4.8%  |
| Kelster                         | Gateway      | 4 | 75%   | 42   | 40  | 40   | -2  | -4.8%  |
| Eaglevale                       | Goldfields   | 4 | 84%   | 40   | 38  | 38   | -2  | -5.0%  |
| Kynston                         | Colder       | 4 | 71%   | 40   | 38  | 38   | -2  | -5.0%  |
| Central Mels. Sunrise           | Balmain      | 4 | 72%   | 57   | 56  | 54   | -3  | -5.3%  |
| Canterbury                      | Eastside     | 4 | 60%   | 41   | 41  | 38   | -3  | -7.3%  |
| Altona City                     | Port Phillip | 4 | 77%   | 30   | 28  | 28   | -2  | -7.7%  |
| Bendigo                         | Goldfields   | 4 | 52%   | 78   | 73  | 72   | -6  | -7.7%  |
| Flora                           | Heritage     | 3 | 68%   | 24   | 24  | 22   | -2  | -8.3%  |
| Bendigo South                   | Goldfields   | 4 | 68%   | 34   | 31  | 31   | -3  | -8.8%  |
| Wentworth                       | Port Phillip | 4 | 66%   | 41   | 38  | 37   | -4  | -9.8%  |
| Yarraville                      | Hobsons Bay  | 4 | 78%   | 20   | 20  | 18   | -2  | -10.0% |
| Malvern                         | Stonnington  | 4 | 73%   | 37   | 36  | 33   | -4  | -10.8% |
| Echuca-Moama                    | Goldfields   | 3 | 71%   | 16   | 16  | 16   | -2  | -11.9% |
| Tullamarine                     | Gateway      |   |       | 19   |     | 16   | -3  | -15.8% |
| Williamstown                    | Hobsons Bay  | 4 | 85%   | 41   | 36  | 34   | -7  | -17.1% |
| No. of Clubs Reporting          |              |   | 64    |      | 64  |      |     |        |
| No. of Members                  |              |   |       | 2550 |     | 2511 | -39 | -1.5%  |
| % Average of Those Reported     |              |   | 69.4% |      |     |      |     |        |
| % of Clubs Reporting Attendance |              |   | 83%   |      |     |      |     |        |
| % of Clubs Reporting Membership |              |   |       |      |     | 10%  |     |        |