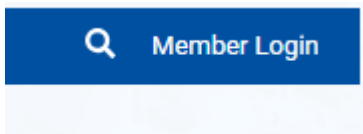


1 **CLICK MEMBER LOGIN (top of screen)**



IF YOUR CLUB USES CLUBRUNNER the LOGIN and PASSWORD will be the same as you use for your CLUB WEBSITE

2 **CLICK NEW USER**

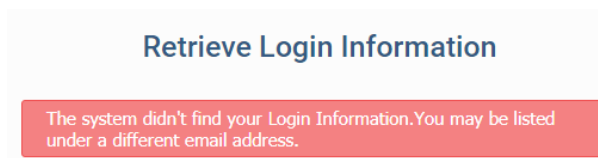
(If you have simply forgotten your Login or Password click the appropriate prompt)

3 **ENTER DETAILS AS OUTLINED**

NOTE: The email address must be the same as recorded on the Rotary International database

A login form with a "Home" link in the top right. It contains the text "Enter your login information below:". There are two input fields: "Login Name" with a "Forgot login name?" link and "Password" with a "Forgot password?" link. At the bottom, there is a checked checkbox for "Keep me logged in" and a "New user?" link.A form titled "Retrieve Login Information". It contains the text: "All members in the District have login accounts in the system. If you cannot retrieve your login information through this page, please contact your Club President, or email logins@clubrunner.ca." Below this is the instruction: "Please select your club, then enter your last name and email address to retrieve your login name and/or reset your password." There are three input fields: "Select Club:" (a dropdown menu with "--- Select Club ---" and an asterisk), "Last Name:" (with an asterisk), and "Email Address:" (with an asterisk). A note says "* Denotes a required field." At the bottom is a blue "Submit" button.

PROBLEMS



IF YOUR CLUB USES CLUBRUNNER for its Club website CONTACT your President or Secretary

IF YOUR CLUB DOES NOT USE CLUBRUNNER email admin@rotarydistrict9800.org.au

Enjoy the new District 9800 website and let us know what you think